

LEA Name : Riverview SD  
Address : 701 10th St  
Oakmont , PA 15139

County : Allegheny  
AUN Number : 103028203  
LEA Type : SD

## Annual Financial Report Accuracy Certification Statement

For Fiscal Year Ending

6/30/2021

Pennsylvania Department of Education

&

Office of Comptroller Operations

PDE-2056: Intermediate Unit

PDE-2057: School District, AVTS/CTC, Charter School,  
and Special Program Jointure

**CERTIFICATION: By signing this page I agree that the electronic data submitted is a complete and accurate statement of the financial operations and status of the local education agency for the fiscal year. It has been prepared in accordance with generally accepted accounting principles and established Commonwealth of PA reporting guidelines.**

  
\_\_\_\_\_  
Chief School Administrator Signature

10/28/21  
\_\_\_\_\_  
Date

  
\_\_\_\_\_  
Board Secretary Signature

10/28/21  
\_\_\_\_\_  
Date

Tammy Good

\_\_\_\_\_  
Contact Person

tgood@rsd.k12.pa.us

\_\_\_\_\_  
Contact Person E-mail Address

(412)828-1800 Ext :4020

\_\_\_\_\_  
Contact Person Telephone Number

(412)828-9346

\_\_\_\_\_  
Contact Person Fax Number

**Audit Certification**  
**Annual Financial Report:**  
For Fiscal Year Ending **6/30/2021**  
**(Pursuant to PA School Code Section 218(b))**

LEA Name : Riverview SD  
AUN Number : 103028203  
County : Allegheny

<b>Audit Certification Due:</b> 12/31/2021
---

This certification is applicable to the Annual Financial Report data submitted through the Consolidated Financial Reporting System (CFRS).

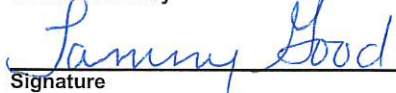
CERTIFICATION: By signing this page I agree that the financial statements of the school have been properly audited as noted above pursuant to Article XXIV, and in the auditor's professional opinion, the Annual Financial Report (PDE-2057) submitted through CFRS is materially consistent with the audited financial statements.

Chief School Administrator

  
\_\_\_\_\_  
Signature

10/28/21  
\_\_\_\_\_  
Date

Board Secretary

  
\_\_\_\_\_  
Signature

10/28/21  
\_\_\_\_\_  
Date

Tammy Good

\_\_\_\_\_  
Contact Person

tgood@rsd.k12.pa.us

\_\_\_\_\_  
Contact Person E-mail Address

(412)828-1800

Ext :4020

\_\_\_\_\_  
Contact Person Telephone Number

(412)828-9346

\_\_\_\_\_  
Contact Person Fax Number

RIVERVIEW  
SCHOOL DISTRICT

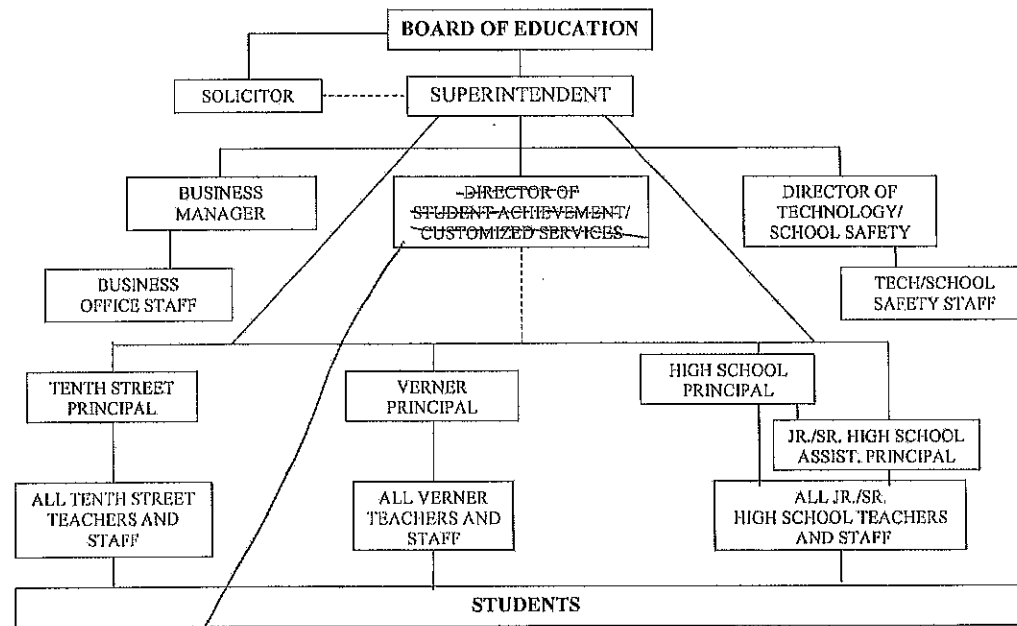
No. 008

SECTION: LOCAL BOARD PROCEDURES

TITLE: ORGANIZATION CHART

ADOPTED: June 18, 2012

REVISED: June 17, 2013



11/14/16  
as of Director of Special Education / Customized Services

# RIVERVIEW SCHOOL DISTRICT

SECTION: FINANCES

TITLE: GASB STATEMENT 34

ADOPTED: June 18, 2012

REVISED:

622. GASB STATEMENT 34	
1. Purpose	<p>The Board recognizes the need to implement the required accounting and financial reporting standards stipulated by the Pennsylvania Department of Education.</p> <p>The primary objectives of implementing the GASB Statement 34 are to assure compliance with state requirements, and properly account for both the financial and economic resources of the district.</p>
2. Authority SC 218, 613	Participation of the school district in any such activity shall be in accordance with Board policy.
3. Delegation of Responsibility	<p>The responsibility to coordinate the compilation and preparation of all information necessary to implement this policy is delegated to the Business Manager.</p> <p>The designated individual shall be responsible for implementing the necessary procedures to establish and maintain a fixed asset inventory, including depreciation schedules. Depreciation shall be computed on a straight-line basis over the useful lives of the assets, using an averaging convention. Normal maintenance and repairs shall be charged to expense as incurred; major renewals and betterments that materially extend the life or increase the value of the asset shall be capitalized. A schedule of accumulated depreciation shall be consistent from year to year. The basis for depreciation, including groups of assets and useful lives, shall be in writing and submitted for review to the Board.</p> <p>The Business Manager shall prepare the required Management Discussion and Analysis (MD&amp;A). The MD&amp;A shall be in the form required by GASB Statement 34 and shall be submitted to the Board for approval, prior to publication.</p> <p>Prior to submission of the MD&amp;A for Board approval, the district's independent auditors shall review the MD&amp;A, in accordance with SAS No. 52, "Required Supplementary Information".</p>

	<p>References:</p> <p>School Code – 24 P.S. Sec. 218, 613</p> <p>Governmental Accounting Standards Board, Statement No. 34</p>
--	--

<u>Val Number</u>	<u>Description</u>	<u>Justification</u>
13020	REG: Interfund Trans-Out must equal REG Interfund Trans-In plus REP Interfund Trans In minus REP Interfund Trans-Out. (REG 5200 = REG 9300 + REP 9300 - REP 5200) Reference amts do not include any incoming transfers of the Fid. Funds. Include Fid. Fund incoming transfer info in the justification. Correct or enter a justification.  Transfers Out (REG 5200): \$1,086,315.00 (REG 9300) + (REP 9300) - (REP 5200) : \$1,083,979.00	Difference is General Fund Contribution to the Student Activities Account for Yearbook & Musical
30160	Federal IDEA revenue has been reported in revenue code 8512 or 8513 rather than in code 6832 as pass thru funds. Please make corrections or provide an explanation.  REV8512: \$8,670.91 REV8513: \$0.00	This account hold the Covid-19 SECIM grant award which was funded by IDEA.
41140	Expenditure Detail - There is an entry in account 5150-990 which should only include bond discounts. Please verify that only bond discounts are being reported within this code.  Expenditure 5150-990, Fund 39: \$71,632.00	Represents the Bond Discount from the Issuance of the 2020 Refunding Bonds.
42420	Expenditure Detail: Total current year 2700-513 expenditure varies from prior year by 10%. Correct the data or enter a justification.  2700-513, AFR Exp Detail: \$714,527.33 2700-513, PY AFR Amount: \$966,370.57	Due to Covid- our special education and non public schools were virtual and did not require busing. Ye
50440	SESS - 2260 Instruction and Curriculum Development Services: SESS Schedule amounts for Special Education vary from prior year by 40% or more. Correct the data or enter a justification.  SESS Schedule 2260: \$18,260.47 Prior Year SESS Schedule 2260: \$32,751.99	Prior Year had the purchase of new textbooks and educational software for math which also allocated more costs in these areas to the special education population of students.
50450	SESS - 2350 Legal and Accounting Services: SESS Schedule amounts for Special Education vary from prior year by 40% or more. Correct the data or enter a justification.  SESS Schedule 2350: \$14,952.80 Prior Year SESS Schedule 2350: \$26,880.00	Less need for solicitor services due to covid and virtual meetings. Also, not as many solicitor services for special education students review of services and due process complaints
50460	SESS - 2420 Medical Services: SESS Schedule amounts for Special Education vary from prior year by 40% or more. Correct the data or enter a justification.  SESS Schedule 2420: \$695.00 Prior Year SESS Schedule 2420: \$1,390.00	The school doctor only provided a half year of services due to covid.



Amounts Expressed in Whole Dollars	<u>General Fund</u> (10)	<u>Student Sponsored</u> <u>Activity Fund</u> (21)	<u>Public Purpose Trust</u> (27)	<u>Other Compt Approved</u> (28)	<u>Athletic / Activity</u> (29)
<b>Assets And Deferred Outflows Of Resources</b>					
<b>Assets</b>					
0100 Cash and Cash Equivalents	7,070,972				
0110 Investments	1,901,931				
0120 Taxes Receivable	1,923,362				
0130 Due From Other Funds	1,227				
0141 Due From Other Governments	744,859				
0142 State Revenue Receivable					
0143 Federal Revenue Receivable					
0145 Other Intergovernmental Revenue Receivable					
0146 Due from Primary Government					
0147 Due from Component Unit					
0150 Other Receivables					
0170 Inventories					
0180 Prepaid Expenses (Expenditures)	203,385				
0190 Other Current Assets	3,717				
<b>Total Assets</b>	<b>\$11,849,453</b>				
0910 Deferred Outflows of Resources					
<b>Total Assets And Deferred Outflows Of Resources</b>	<b>\$11,849,453</b>				

LEA : 103028203 Riverview SD

Printed 10/28/2021 10:51:38 AM

Page - 2 of 6

Amounts Expressed In Whole Dollars	<u>Capital Reserve (690,1850)</u> (31)	<u>Capital Reserve (1431)</u> (32)	<u>Other Capital Projects</u> <u>Fund</u> (39)	<u>Debt Service</u> (40)	<u>Permanent</u> (90)
<b>Assets And Deferred Outflows Of Resources</b>					
<b>Assets</b>					
0100 Cash and Cash Equivalents		2,321,566	5,861,683		
0110 Investments		248,000			
0120 Taxes Receivable					
0130 Due From Other Funds					
0141 Due From Other Governments					
0142 State Revenue Receivable					
0143 Federal Revenue Receivable					
0145 Other Intergovernmental Revenue Receivable					
0146 Due from Primary Government					
0147 Due from Component Unit					
0150 Other Receivables					
0170 Inventories					
0180 Prepaid Expenses (Expenditures)					
0190 Other Current Assets					
<b>Total Assets</b>		<b>\$2,569,566</b>	<b>\$5,861,683</b>		
0910 Deferred Outflows of Resources					
<b>Total Assets And Deferred Outflows Of Resources</b>		<b>\$2,569,566</b>	<b>\$5,861,683</b>		

Amounts Expressed in Whole Dollars

Total Governmental  
Funds**Assets And Deferred Outflows Of Resources****Assets**

0100 Cash and Cash Equivalents	15,254,221
0110 Investments	2,149,931
0120 Taxes Receivable	1,923,362
0130 Due From Other Funds	1,227
0141 Due From Other Governments	744,859
0142 State Revenue Receivable	
0143 Federal Revenue Receivable	
0145 Other Intergovernmental Revenue Receivable	
0146 Due from Primary Government	
0147 Due from Component Unit	
0150 Other Receivables	
0170 Inventories	
0180 Prepaid Expenses (Expenditures)	203,385
0190 Other Current Assets	3,717
<b>Total Assets</b>	<b>\$20,280,702</b>
0910 Deferred Outflows of Resources	
<b>Total Assets And Deferred Outflows Of Resources</b>	<b>\$20,280,702</b>

LEA : 103028203 Riverview SD

Printed 10/28/2021 10:51:38 AM

Page - 4 of 6

Amounts Expressed in Whole Dollars	<u>General Fund</u> (10)	<u>Student Sponsored</u> <u>Activity Fund</u> (21)	<u>Public Purpose Trust</u> (27)	<u>Other Compt Approved</u> (28)	<u>Athletic / Activity</u> (29)
<b>Liabilities And Deferred Inflows Of Resources And Fund Balances</b>					
<b>Liabilities</b>					
0400 Due to Other Funds					
0411 Due to Other Governments					
0412 Due to Primary Government					
0413 Due to Component Unit					
0420 Accounts Payable	123,135				
0430 Contracts Payable					
0440 Current Portion of Long-Term Debt					
0450 Short-Term Payables					
0461 Accrued Salaries and Benefits	2,462,338				
0462 Payroll Deductions and Withholding	1,384				
0480 Unearned Revenues					
0490 Other Current Liabilities					
<b>Total Liabilities</b>	<b>\$2,586,857</b>				
0950 Deferred Inflows of Resources	1,536,930				
<b>Fund Balances</b>					
0810 Nonspendable Fund Balance	203,385				
0820 Restricted Fund Balance					
0830 Committed Fund Balance	4,864,415				
0840 Assigned Fund Balance	789,283				
0850 Unassigned Fund Balance	1,868,583				
<b>Total Fund Balances</b>	<b>\$7,725,666</b>				
<b>Total Liabilities, Deferred Inflows Of Resources And Fund Balances</b>	<b>\$11,849,453</b>				

LEA : 103028203 Riverview SD

Printed 10/28/2021 10:51:38 AM

Page - 5 of 6

Amounts Expressed in Whole Dollars	<u>Capital Reserve (690,1850)</u> (31)	<u>Capital Reserve (1431)</u> (32)	<u>Other Capital Projects</u> <u>Fund</u> (39)	<u>Debt Service</u> (40)	<u>Permanent</u> (90)
<b>Liabilities And Deferred Inflows Of Resources And Fund Balances</b>					
<b>Liabilities</b>					
0400 Due to Other Funds					
0411 Due to Other Governments					
0412 Due to Primary Government					
0413 Due to Component Unit					
0420 Accounts Payable		7,592	396,251		
0430 Contracts Payable			169,653		
0440 Current Portion of Long-Term Debt					
0450 Short-Term Payables					
0461 Accrued Salaries and Benefits					
0462 Payroll Deductions and Withholding					
0480 Unearned Revenues					
0490 Other Current Liabilities					
<b>Total Liabilities</b>		<b>\$7,592</b>	<b>\$565,904</b>		
0950 Deferred Inflows of Resources					
<b>Fund Balances</b>					
0810 Nonspendable Fund Balance					
0820 Restricted Fund Balance			5,295,779		
0830 Committed Fund Balance		2,561,974			
0840 Assigned Fund Balance					
0850 Unassigned Fund Balance					
<b>Total Fund Balances</b>		<b>\$2,561,974</b>	<b>\$5,295,779</b>		
<b>Total Liabilities, Deferred Inflows Of Resources And Fund Balances</b>		<b>\$2,569,566</b>	<b>\$5,861,683</b>		

LEA : 103028203 Riverview SD

Printed 10/28/2021 10:51:38 AM

Page - 6 of 6

Amounts Expressed in Whole Dollars

**Total Governmental  
Funds****Liabilities And Deferred Inflows Of Resources And Fund Balances****Liabilities**

0400 Due to Other Funds	
0411 Due to Other Governments	
0412 Due to Primary Government	
0413 Due to Component Unit	
0420 Accounts Payable	526,978
0430 Contracts Payable	169,653
0440 Current Portion of Long-Term Debt	
0450 Short-Term Payables	
0461 Accrued Salaries and Benefits	2,462,338
0462 Payroll Deductions and Withholding	1,384
0480 Unearned Revenues	
0490 Other Current Liabilities	

<b>Total Liabilities</b>	<b>\$3,160,353</b>
--------------------------	--------------------

0950 Deferred Inflows of Resources	1,536,930
------------------------------------	-----------

**Fund Balances**

0810 Nonspendable Fund Balance	203,385
0820 Restricted Fund Balance	5,295,779
0830 Committed Fund Balance	7,426,389
0840 Assigned Fund Balance	789,283
0850 Unassigned Fund Balance	1,868,583

<b>Total Fund Balances</b>	<b>\$15,583,419</b>
----------------------------	---------------------

<b>Total Liabilities, Deferred Inflows Of Resources And Fund Balances</b>	<b>\$20,280,702</b>
---	---------------------

Amounts Expressed in Whole Dollars

	<u>General Fund</u> (10)	<u>Student Sponsored</u> <u>Activity Fund</u> (21)	<u>Public Purpose Trust</u> (27)	<u>Other Compt Approved</u> (28)	<u>Athletic / Activity</u> (29)
<b>Revenues</b>					
6000 Revenue from Local Sources	17,739,731				
7000 Revenue from State Sources	6,741,965				
8000 Revenue from Federal Sources	685,230				
<b>Total Revenues</b>	<b>\$25,166,926</b>				
<b>Expenditures</b>					
1000 Instruction	13,356,119				
2000 Support Services	7,205,738				
3000 Operation of Non-Instructional Services	636,165				
4000 Facilities Acquisition, Construction and Improvement Services	133,239				
5110 Debt Service	1,522,402				
5130 Refund of Prior Year Revenues / Receipts	53,234				
<b>Total Expenditures</b>	<b>\$22,906,897</b>				
<b>Excess (Deficiency) Of Revenues Over Expenditures</b>	<b>\$2,260,029</b>				
<b>Other Financing Sources (Uses)</b>					
9110 Face Value of Bonds Issued	100,000				
9120 Proceeds from Refunding of Bonds	9,555,000				
9130 Bond Premiums	435,079				
9200 Proceeds from Extended-Term Financing					
9300 Interfund Transfers - IN					
9400 Sale of or Compensation for Loss of Fixed Assets					
9710 Transfers from Component Units					
9720 Transfers from Primary Governments					
9910 Other Financing Sources Not Listed in the 9000 Series					
9990 Insurance Recoveries					
5120 Debt Service - Refunded Bonds	9,826,535				
5150 Bond Discounts					
5200 Interfund Transfers - Out	1,086,315				
5300 Transfers Out to Component Units/Primary Governments					
<b>Total Other Financing Sources (Uses)</b>	<b>(\$822,771)</b>				

Amounts Expressed in Whole Dollars	<u>Capital Reserve (690)</u> <u>1850</u> <u>(31)</u>	<u>Capital Reserve (1431)</u> <u>(32)</u>	<u>Other Capital Projects</u> <u>Fund</u> <u>(39)</u>	<u>Debt Service</u> <u>(40)</u>	<u>Permanent</u> <u>(90)</u>
<b>Revenues</b>					
6000 Revenue from Local Sources		7,345	9,318		
7000 Revenue from State Sources					
8000 Revenue from Federal Sources					
<b>Total Revenues</b>		<b>\$7,345</b>	<b>\$9,318</b>		
<b>Expenditures</b>					
1000 Instruction					
2000 Support Services		1,075	137,808		
3000 Operation of Non-Instructional Services					
4000 Facilities Acquisition, Construction and Improvement Services		124,702	2,097,245		
5110 Debt Service					
5130 Refund of Prior Year Revenues / Receipts					
<b>Total Expenditures</b>		<b>\$125,777</b>	<b>\$2,235,053</b>		
<b>Excess (Deficiency) Of Revenues Over Expenditures</b>		<b>(\$118,432)</b>	<b>(\$2,225,735)</b>		
<b>Other Financing Sources (Uses)</b>					
9110 Face Value of Bonds Issued			7,215,000		
9120 Proceeds from Refunding of Bonds					
9130 Bond Premiums					
9200 Proceeds from Extended-Term Financing					
9300 Interfund Transfers - IN		1,000,000			
9400 Sale of or Compensation for Loss of Fixed Assets					
9710 Transfers from Component Units					
9720 Transfers from Primary Governments					
9910 Other Financing Sources Not Listed in the 9000 Series					
9990 Insurance Recoveries					
5120 Debt Service – Refunded Bonds					
5150 Bond Discounts			71,632		
5200 Interfund Transfers – Out					
5300 Transfers Out to Component Units/Primary Governments					
<b>Total Other Financing Sources (Uses)</b>		<b>\$1,000,000</b>	<b>\$7,143,368</b>		

Amounts Expressed in Whole Dollars

**Total Governmental  
Funds****Revenues**

6000 Revenue from Local Sources	17,756,394
7000 Revenue from State Sources	6,741,965
8000 Revenue from Federal Sources	685,230

<b>Total Revenues</b>	<b>\$25,183,589</b>
-----------------------	---------------------

**Expenditures**

1000 Instruction	13,356,119
2000 Support Services	7,344,621
3000 Operation of Non-Instructional Services	636,165
4000 Facilities Acquisition, Construction and Improvement Services	2,355,186
5110 Debt Service	1,522,402
5130 Refund of Prior Year Revenues / Receipts	53,234

<b>Total Expenditures</b>	<b>\$25,267,727</b>
---------------------------	---------------------

<b>Excess (Deficiency) Of Revenues Over Expenditures</b>	<b>(\$84,138)</b>
--	-------------------

**Other Financing Sources (Uses)**

9110 Face Value of Bonds Issued	7,315,000
9120 Proceeds from Refunding of Bonds	9,555,000
9130 Bond Premiums	435,079
9200 Proceeds from Extended-Term Financing	
9300 Interfund Transfers - IN	1,000,000
9400 Sale of or Compensation for Loss of Fixed Assets	
9710 Transfers from Component Units	
9720 Transfers from Primary Governments	
9910 Other Financing Sources Not Listed in the 9000 Series	
9990 Insurance Recoveries	
5120 Debt Service – Refunded Bonds	9,826,535
5150 Bond Discounts	71,632
5200 Interfund Transfers – Out	1,086,315
5300 Transfers Out to Component Units/Primary Governments	

<b>Total Other Financing Sources (Uses)</b>	<b>\$7,320,597</b>
---	--------------------

Amounts Expressed in Whole Dollars

	<u>General Fund</u> (10)	<u>Student Sponsored</u> <u>Activity Fund</u> (21)	<u>Public Purpose Trust</u> (27)	<u>Other Compt Approved</u> (28)	<u>Athletic / Activity</u> (29)
<b>Special And Extraordinary Items</b>					
9920 Special Items – Gains					
9930 Extraordinary Items – Gains					
5520 Special Items – Losses					
5530 Extraordinary Items -- Losses					
<b>Net Change in Fund Balances</b>	<b>\$1,437,258</b>				
<b>Fund Balance</b>					
0001 Fund Balance - Beginning of Fiscal Year	6,288,409				
<b>Fund Balance - End Of Year</b>	<b>\$7,725,667</b>				

Amounts Expressed in Whole Dollars	<u>Capital Reserve (690,</u> <u>1850)</u> <u>(31)</u>	<u>Capital Reserve (1431)</u> <u>(32)</u>	<u>Other Capital Projects</u> <u>Fund</u> <u>(39)</u>	<u>Debt Service</u> <u>(40)</u>	<u>Permanent</u> <u>(90)</u>
<b>Special And Extraordinary Items</b>					
9920 Special Items – Gains					
9930 Extraordinary Items – Gains					
5520 Special Items – Losses					
5530 Extraordinary Items – Losses					
<b>Net Change In Fund Balances</b>		<b>\$881,568</b>	<b>\$4,917,633</b>		
<b>Fund Balance</b>					
0001 Fund Balance - Beginning of Fiscal Year		1,680,406	378,145		
<b>Fund Balance - End Of Year</b>		<b>\$2,561,974</b>	<b>\$5,295,778</b>		

Amounts Expressed in Whole Dollars

**Total Governmental  
Funds****Special And Extraordinary Items**

9920 Special Items -- Gains

9930 Extraordinary Items -- Gains

5520 Special Items -- Losses

5530 Extraordinary Items -- Losses

**Net Change in Fund Balances****\$7,236,459****Fund Balance**

0001 Fund Balance - Beginning of Fiscal Year

8,346,960

**Fund Balance - End Of Year****\$15,583,419**

Amounts Expressed in Whole Dollars

	<u>Food Service</u> (51)	<u>Child Care</u> <u>Operations</u> (52)	<u>Other Enterprise</u> (58)	<u>TOTAL</u>	<u>Internal Service</u> (60)
<b>Assets And Deferred Outflows Of Resources</b>					
<b>Current Assets</b>					
0100 Cash and Cash Equivalents	90,916			90,916	
0110 Investments					
0130 Due From Other Funds					
0141 Due From Other Governments	20,354			20,354	
0142 State Revenue Receivable					
0143 Federal Revenue Receivable					
0146 Due from Primary Government					
0147 Due from Component Unit					
0150 Other Receivables	124			124	
0170 Inventories	12,212			12,212	
0180 Prepaid Expenses (Expenditures)					
0190 Other Current Assets					
<b>Total Current Assets</b>	<b>\$123,606</b>			<b>\$123,606</b>	
<b>Noncurrent Assets</b>					
0211 Land					
0212 Site Improvements (Net)					
0220 Buildings and Building Improvements (Net)					
0230 Machinery, Equipment and Furniture (Net)	29,759			29,759	
0250 Construction in Progress					
0260 Long Term Prepayments					
0290 Other Noncurrent Assets					
<b>Total Noncurrent Assets</b>	<b>\$29,759</b>			<b>\$29,759</b>	
0910 Deferred Outflows of Resources					
<b>Total Assets And Deferred Outflows Of Resources</b>	<b>\$153,365</b>			<b>\$153,365</b>	

Amounts Expressed in Whole Dollars	<u>Food Service</u> <u>(51)</u>	<u>Child Care</u> <u>Operations</u> <u>(52)</u>	<u>Other Enterprise</u> <u>(58)</u>	<u>TOTAL</u>	<u>Internal Service</u> <u>(60)</u>
<b>Liabilities And Deferred Inflows Of Resources And Net Position</b>					
<b>Current Liabilities</b>					
0400 Due to Other Funds	1,227			1,227	
0411 Due to Other Governments					
0413 Due to Component Unit					
0420 Accounts Payable	7,716			7,716	
0430 Contracts Payable					
0440 Current Portion of Long-Term Debt					
0450 Short-Term Payables					
0461 Accrued Salaries and Benefits					
0462 Payroll Deductions and Withholding					
0480 Unearned Revenues	4,904			4,904	
0490 Other Current Liabilities					
<b>Total Current Liabilities</b>	<b>\$13,847</b>			<b>\$13,847</b>	
<b>Noncurrent Liabilities</b>					
0510 Bonds Payable					
0520 Extended-Term Financing Agreements Payable					
0530 Lease-Purchase Obligations					
0540 Accumulated Compensated Absences					
0550 Authority Lease Obligations					
0560 Other Post-Employment Benefits (OPEB)					
0570 Net Pension Liability					
0599 Other Noncurrent Liabilities					
<b>Total Noncurrent Liabilities</b>					
<b>Total Liabilities</b>	<b>\$13,847</b>			<b>\$13,847</b>	
0950 Deferred Inflows of Resources					
<b>Net Position</b>					
0791 Net Investment in Capital Assets	29,759			29,759	
0008 Restricted Net Position (0792 – 0798)					
0799 Unrestricted Net Position	109,759			109,759	
<b>Total Net Position</b>	<b>\$139,518</b>			<b>\$139,518</b>	
<b>Total Liabilities And Deferred Inflows Of Resources And Net Position</b>	<b>\$153,365</b>			<b>\$153,365</b>	

Amounts Expressed in Whole Dollars	<u>Food Service</u> (51)	<u>Child Care Operations</u> (52)	<u>Other Enterprise</u> (58)	<u>TOTAL</u>	<u>Internal Service</u> (60)
<b>Operating Revenues</b>					
6600 Food Service Revenue	10,670			10,670	
0071 Charges for Services					
0072 Other Operating Revenue					
<b>Total Operating Revenues</b>	<b>\$10,670</b>			<b>\$10,670</b>	
<b>Operating Expenses</b>					
100 Personnel Services – Salaries					
200 Personnel Services – Employee Benefits					
300 Purchased Professional and Technical Services					
400 Purchased Property Services					
500 Other Purchased Services	405,455			405,455	
600 Supplies	41,262			41,262	
740 Depreciation	8,541			8,541	
810 Dues and Fees	1,617			1,617	
880 Refunds of Prior Years' Receipts					
890 Miscellaneous Expenditures					
<b>Total Operating Expenses</b>	<b>\$456,875</b>			<b>\$456,875</b>	
<b>Operating Income (Loss)</b>	<b>(\$446,205)</b>			<b>(\$446,205)</b>	
<b>Non Operating Revenues (Expenses)</b>					
6500 Earnings on Investments	128			128	
6920 Contributions and Donations from Private Sources					
6930 Gains or Losses on Sale of Fixed Assets					
6991 Refunds of a Prior Year Expenditure					
7000 Revenue from State Sources	13,772			13,772	
8000 Revenue from Federal Sources	372,696			372,696	
9990 Insurance Recoveries					
820 Claims and Judgments Against the LEA					
830 Interest					
<b>TOTAL Non Operating Revenues (Expenses)</b>	<b>\$386,596</b>			<b>\$386,596</b>	
<b>Income (Loss) Before Contributions And Transfers</b>	<b>(\$59,609)</b>			<b>(\$59,609)</b>	

Amounts Expressed in Whole Dollars	<u>Food Service</u> (51)	<u>Child Care Operations</u> (52)	<u>Other Enterprise</u> (58)	<u>TOTAL</u>	<u>Internal Service</u> (60)
<b>Contributions, Transfers, and Special and Extraordinary Items</b>					
5200 Interfund Transfers – Out					
5300 Transfers Out to Component Units/Primary Governments					
5520 Special Items – Losses					
5530 Extraordinary Items – Losses					
9300 Interfund Transfers - IN	83,979			83,979	
9500 Capital Contributions					
9700 Transfers IN From Component Units/Primary Governments					
9920 Special Items – Gains					
9930 Extraordinary Items – Gains					
<b>Change In Net Position</b>	<b>\$24,370</b>			<b>\$24,370</b>	
0002 Net Position - Beginning of Fiscal Year	115,148			115,148	
0003 Accounting Changes / Residual Equity Transfers					
<b>Net Position - End Of Year</b>	<b>\$139,518</b>			<b>\$139,518</b>	

LEA : 103028203 Riverview SD

Printed 10/28/2021 10:52:01 AM

Page - 1 of 4

Amounts Expressed in Whole Dollars	<u>Food Service</u> (51)	<u>Child Care Operations</u> (52)	<u>Other Enterprise</u> (58)	<u>TOTAL</u>	<u>Internal Service(60)</u>
<b>Cash Flows From Operating Activities</b>					
0011 Cash Receipts From Users	8,513			8,513	
0012 Cash Receipts From Assessments Made to Other Funds					
0013 Cash Receipts From Earnings on Investments					
0014 Cash Receipts From Other Operating Revenue					
0015 Cash Payments To Employees For Services					
0016 Cash Payments For Insurance Claims					
0017 Cash Payments To Suppliers For Goods and Services	403,540			403,540	
0018 Cash Payments For Other Operating Expenses	1,617			1,617	
<b>Net Cash Provided By (Used For) Operating Activities</b>	<b>(\$396,644)</b>			<b>(\$396,644)</b>	
<b>Cash Flows From Non-Capital Financing Activities</b>					
0021 Receipts From Local Sources - 6000					
0022 Receipts From State Sources - 7000	13,497			13,497	
0023 Receipts From Federal Sources -8000	324,310			324,310	
0024 Notes and Loans Received (Repaid)					
0025 Interest Paid on Notes/Loans - 5100-830					
0026 Operating Transfers In (Out)/Residual Equity Trans	83,979			83,979	
0027 Operating Transfers In (Out) Primary Government / Comp Unit					
0028 Receipts From Refund of Prior Year Expenditures - 6991					
0029 Special and Extraordinary Gains (losses)					
0030 Receipts from Insurance Recoveries -9990					
<b>Net Cash Prov By (Used for) Non-Capital Financing Activities</b>	<b>\$421,786</b>			<b>\$421,786</b>	
<b>Cash Flows From Capital and Related Financing Activities</b>					
0031 Payments For Fac Acq, Const, and Imp - 4000					
0032 Gain / (Loss) on Sale of Fixed Assets - 6930					
0033 Proceeds From Extended Term Financing - 9200					
0034 Principal Paid on Financing Agreements					
0035 Interest Paid on Financing Agreements - 5100-830					
0036 (Inc) Dec In Contributed Capital					
<b>Net Cash Prov By (Used for) Capital and Related Financing Activities</b>					
<b>Cash Flows From Investing Activities</b>					
0041 Earnings on Investments - 6500	128			128	
0042 Purchase of Inv Securities / Deposits to Inv Pools					
0043 Receipts From Investment Pool Withdrawals					
0044 Proceeds from Sale and Maturity of Inv Securities					

0045 Loans Received (Paid)			
Net Cash Prov By (Used for) Investing Activities	\$128		\$128

	<u>Food Service</u> (51)	<u>Child Care Operations</u> (52)	<u>Other Enterprise</u> (58)	<u>TOTAL</u>	<u>Internal Service</u> (60)
<b>Net Increase (Decrease) in Cash Flows</b>	<b>25,270</b>			<b>25,270</b>	
0004 Cash and Cash Equivalents Beginning of Year					
<b>Cash and Cash Equivalents at Year End</b>	<b>\$25,270</b>			<b>\$25,270</b>	
<hr/>					
<b>Reconciliation of Operating Income (Loss) To Net Cash Provided by (Used For) Operating Activities</b>					
0005 Operating Income (Loss) per REP	(446,205)			(446,205)	
<b>Adjustments</b>					
0051 Depreciation and Net Amortization	8,541			8,541	
0052 Provision for Uncollectible Accounts					
0053 Other Adjustments	41,262			41,262	
<b>Effect of Changes in Assets, Liabilities, Deferred Outflows and Deferred Inflows</b>					
0054 (Inc) Dec in Accounts Receivable (0120-0150)	397			397	
0055 Advances to Other Funds (0160)					
0056 (Inc) Dec in Inventories (0170)	3,316			3,316	
0057 (Inc) Dec in Prepaid Expenses (0180)					
0058 (Inc) Dec in Other Current or Noncurrent Assets					
0064 Deferred Outflows (0910)					
0059 Inc (Dec) in Accounts Payable (0400-0450)	(1,401)			(1,401)	
0060 Inc (Dec) in Accrued Salaries/Benefits (0461)					
0065 Inc (Dec) in Net Pension Liabilities (0570)					
0066 Inc (Dec) in Other Postemp Benefit Oblig (0560)					
0061 Inc (Dec) in Payroll Deductions/Withholding (0462)					
0062 Inc (Dec) in Unearned Revenue (0480)	(2,554)			(2,554)	
0063 Inc (Dec) in Other Current or Noncurrent Liabilities					
0067 Deferred Inflows (0950)					
<b>Total Adjustments</b>	<b>\$49,561</b>			<b>\$49,561</b>	
<b>Cash Provided By (Used for) Total</b>	<b>(\$396,644)</b>			<b>(\$396,644)</b>	

COMBINED STATEMENT OF CASH FLOWS  
SCHEDULE OF NONCASH INVESTING, CAPITAL, AND FINANCING ACTIVITIES

Explanation of Transaction and Balance Sheet Effect	Amount
Total	

LEA : 103028203 Riverview SD

Printed 10/28/2021 10:52:03 AM

Page - 1 of 4

Amounts Expressed In Whole Dollars	<u>Private Purpose Trust</u> (71)	<u>Investment Trust</u> (72)	<u>Pension Trust</u> (73)	<u>Student Activity Custodial</u> (81)
<b>Assets And Deferred Outflows Of Resources</b>				
<b>Assets</b>				
0100 Cash and Cash Equivalents	54,053			35,831
0110 Investments				
0130 Due From Other Funds				
0140 Due from Other Governments, Primary Government and Component Units				
0150 Other Receivables				
0170 Inventories				
0180 Prepaid Expenses (Expenditures)				
0190 Other Current Assets				
0220 Buildings and Building Improvements (Net)				
0230 Machinery, Equipment and Furniture (Net)				
<b>Total Assets</b>	<b>\$54,053</b>			<b>\$35,831</b>
0910 Deferred Outflows of Resources				
<b>Total Assets And Deferred Outflows Of Resources</b>	<b>\$54,053</b>			<b>\$35,831</b>

LEA : 103028203 Riverview SD

Printed 10/28/2021 10:52:03 AM

Page - 2 of 4

Amounts Expressed in Whole Dollars	<u>Other Custodial</u> (89)	<u>Fiduciary Component Units</u> (98)	<u>Total Fiduciary Funds</u>
<b>Assets And Deferred Outflows Of Resources</b>			
<b>Assets</b>			
0100 Cash and Cash Equivalents			89,884
0110 Investments			
0130 Due From Other Funds			
0140 Due from Other Governments, Primary Government and Component Units			
0150 Other Receivables			
0170 Inventories			
0180 Prepaid Expenses (Expenditures)			
0190 Other Current Assets			
0220 Buildings and Building Improvements (Net)			
0230 Machinery, Equipment and Furniture (Net)			
<b>Total Assets</b>			<b>\$89,884</b>
0910 Deferred Outflows of Resources			
<b>Total Assets And Deferred Outflows Of Resources</b>			<b>\$89,884</b>

LEA : 103028203 Riverview SD

Printed 10/28/2021 10:52:03 AM

Page - 3 of 4

Amounts Expressed in Whole Dollars	<u>Private Purpose Trust</u> (71)	<u>Investment Trust</u> (72)	<u>Pension Trust</u> (73)	<u>Student Activity Custodial</u> (81)
<b>Liabilities, Deferred Inflows Of Resources And Net Position</b>				
<b>Liabilities</b>				
0400 Due to Other Funds				
0410 Due to Other Governments, Primary Government and Component Units				
0420 Accounts Payable				
0430 Contracts Payable				
0450 Short-Term Payables				
0460 Payroll Accruals and Withholdings				
0480 Unearned Revenues				
0490 Other Current Liabilities				
<b>Total Liabilities</b>				
0950 Deferred Inflows of Resources				
<b>Net Position</b>				
0791 Net Investment in Capital Assets				
0009 Restricted Net Position (0792 – 0798)	54,053			35,831
0799 Unrestricted Net Position				
<b>Total Net Position</b>	<b>\$54,053</b>			<b>\$35,831</b>
<b>Total Liabilities, Deferred Inflows Of Resources And Net Position</b>	<b>\$54,053</b>			<b>\$35,831</b>

LEA : 103028203 Riverview SD

Printed 10/28/2021 10:52:03 AM

Page - 4 of 4

Amounts Expressed in Whole Dollars	<u>Other Custodial</u> (89)	<u>Fiduciary Component Units</u> (98)	<u>Total Fiduciary Funds</u>
<b>Liabilities, Deferred Inflows Of Resources And Net Position</b>			
<b>Liabilities</b>			
0400 Due to Other Funds			
0410 Due to Other Governments, Primary Government and Component Units			
0420 Accounts Payable			
0430 Contracts Payable			
0450 Short-Term Payables			
0460 Payroll Accruals and Withholdings			
0480 Unearned Revenues			
0490 Other Current Liabilities			
<b>Total Liabilities</b>			
0950 Deferred Inflows of Resources			
<b>Net Position</b>			
0791 Net Investment in Capital Assets			
0009 Restricted Net Position (0792 – 0798)			89,884
0799 Unrestricted Net Position			
<b>Total Net Position</b>			<b>\$89,884</b>
<b>Total Liabilities, Deferred Inflows Of Resources And Net Position</b>			<b>\$89,884</b>

LEA : 103028203 Riverview SD

Printed 10/28/2021 10:52:06 AM

Page - 1 of 2

Amounts Expressed in Whole Dollars	<u>Private Purpose Trust</u> (71)	<u>Investment Trust</u> (72)	<u>Pension Trust</u> (73)	<u>Student Activity</u> <u>Custodial</u> (81)	<u>Other Custodial</u> (89)	<u>Fiduciary Component</u> <u>Units</u> (98)
<b>Additions</b>						
0091 Gifts and Contributions						
0095 Net Investment Earnings	27			12		
0092 Other Additions				25,273		
<b>Deductions</b>						
0093 Scholarships Awarded	6,750					
0094 Other Deductions				27,433		
<b>Change in Net Position</b>	<b>(\$6,723)</b>			<b>(\$2,148)</b>		
0006 Net Position – Beginning of Fiscal Year	60,776			37,979		
0007 Net Position Held in Trust for Pension Benefits						
<b>Net Position - End of Fiscal Year</b>	<b>\$54,053</b>			<b>\$35,831</b>		

Amounts Expressed in Whole Dollars	<u>Total Fiduciary Funds</u>
<b>Additions</b>	
0091 Gifts and Contributions	
0095 Net Investment Earnings	39
0092 Other Additions	25,273
<b>Deductions</b>	
0093 Scholarships Awarded	6,750
0094 Other Deductions	27,433
<b>Change in Net Position</b>	<b>(\$8,871)</b>
0006 Net Position – Beginning of Fiscal Year	98,755
0007 Net Position Held in Trust for Pension Benefits	
<b>Net Position - End of Fiscal Year</b>	<b>\$89,884</b>

	Revenue Reported In Current Year	Current Year Tax Accrual	Prior Year Tax Accrual	Taxes Collected In Current Year
<b><u>Revenue from Local Sources</u></b>				
6111 Current Real Estate Taxes	14,528,062.39			14,528,062.39
6113 Public Utility Realty Taxes	15,862.77			15,862.77
6143 Current Act 511 Local Services Taxes	21,949.43			21,949.43
6151 Current Act 511 Earned Income Taxes	1,168,165.19			1,168,165.19
6153 Current Act 511 Real Estate Transfer Taxes	355,702.29			355,702.29
6411 Delinquent Real Estate Taxes	975,379.02			975,379.02
6451 Delinquent Act 511 Earned Income Taxes	418,770.71			418,770.71
6500 Earnings on Investments	8,405.43			
6700 Revenues from LEA Activities	(2,492.66)			
6832 Federal IDEA Revenue Received as Pass Through	201,733.68			
6910 Rentals	8,580.00			
6920 Contributions and Donations from Private Sources	13.15			
6991 Refunds of a Prior Year Expenditure	30,939.42			
6999 Other Revenues Not Specified Above	8,660.03			
<b>TOTAL Revenue from Local Sources</b>	<b>\$17,739,730.85</b>			<b>\$17,483,891.80</b>

	<b>Revenue Reported In Current Year</b>
<b><u>Revenue from State Sources</u></b>	
7111 Basic Education Funding-Formula	3,095,545.38
7112 Basic Education Funding-Social Security	350,117.67
7160 Tuition for Orphans Subsidy	16,339.27
7220 Vocational Education	9,290.50
7271 Special Education funds for School-Aged Pupils	702,906.33
7311 Pupil Transportation Subsidy	193,832.35
7312 Nonpublic and Charter School Pupil Transportation Subsidy	22,715.00
7320 Rental and Sinking Fund Payments / Building Reimbursement Subsidy	198,885.71
7330 Health Services (Medical, Dental, Nurse, Act 25)	20,434.38
7340 State Property Tax Reduction Allocation	355,532.29
7505 Ready to Learn Block Grant	126,151.00
7820 State Share of Retirement Contributions	1,650,215.17
<b>TOTAL Revenue from State Sources</b>	<b>\$6,741,965.05</b>

	Revenue Reported In Current Year
<b><u>Revenue from Federal Sources</u></b>	
8512 IDEA, Part B	8,670.91
8514 NCLB, Title I - Improving the Academic Achievement of the Disadvantaged	188,020.00
8515 NCLB, Title II - Preparing, Training and Recruiting High Quality Teachers and Principals	46,251.00
8517 NCLB, Title IV - 21st Century Schools	14,048.00
8690 Other Restricted Federal Grants-in-Aid Through the Commonwealth of PA	64,220.00
8741 Elementary and Secondary School Emergency Relief Fund (ESSER)	182,382.00
8743 ESSER II - Elementary and Secondary School Emergency Relief Fund	4,520.55
8749 Other CARES Act Funding	152,613.70
8810 School-Based Access Medicaid Reimbursement Program (SBAP) Reimbursements (Access)	23,484.38
8820 Medical Assistance Reimbursement for Administrative Claiming (Quarterly) Program	1,019.70
<b>TOTAL Revenue from Federal Sources</b>	<b>\$685,230.24</b>

	Revenue Reported In Current Year	
<b><u>Other Financing Sources</u></b>		
9110 Face Value of Bonds Issued	100,000.00	
9120 Proceeds from Refunding of Bonds	9,555,000.00	
9130 Bond Premiums	435,078.65	
<b>TOTAL Other Financing Sources</b>	<b>\$10,090,078.65</b>	
<b>TOTAL FROM ALL SOURCES</b>	<b>\$35,257,004.79</b>	<b>\$17,483,891.80</b>

LEA : 103028203 Riverview SD

Printed 10/28/2021 10:52:13 AM

Page - 1 of 4

	<u>General Fund (10)</u>	<u>Student Sponsored Activity Fund (21)</u>	<u>Public Purpose Trust (27)</u>	<u>Other Compt Approved (28)</u>	<u>Athletic / Activity (29)</u>	<u>Capital Reserve (690, 1850) (31)</u>
<b>6000 Revenue from Local Sources</b>						
6111 Current Real Estate Taxes	14,528,062.39					
6113 Public Utility Realty Taxes	15,862.77					
6143 Current Act 511 Local Services Taxes	21,949.43					
6151 Current Act 511 Earned Income Taxes	1,168,165.19					
6153 Current Act 511 Real Estate Transfer Taxes	355,702.29					
6411 Delinquent Real Estate Taxes	975,379.02					
6451 Delinquent Act 511 Earned Income Taxes	418,770.71					
6500 Earnings on Investments	8,405.43					
6700 Revenues from LEA Activities	(2,492.66)					
6832 Federal IDEA Revenue Received as Pass Through	201,733.68					
6910 Rentals	8,580.00					
6920 Contributions and Donations from Private Sources	13.15					
6991 Refunds of a Prior Year Expenditure	30,939.42					
6999 Other Revenues Not Specified Above	8,660.03					
<b>6000 Total Revenue from Local Sources</b>	<b>\$17,739,730.85</b>					
<b>7000 Revenue from State Sources</b>						
7111 Basic Education Funding-Formula	3,095,545.38					
7112 Basic Education Funding-Social Security	350,117.67					
7160 Tuition for Orphans Subsidy	16,339.27					
7220 Vocational Education	9,290.50					
7271 Special Education funds for School-Aged Pupils	702,906.33					
7311 Pupil Transportation Subsidy	193,832.35					
7312 Nonpublic and Charter School Pupil Transportation Subsidy	22,715.00					
7320 Rental and Sinking Fund Payments / Building Reimbursement Subsidy	198,885.71					
7330 Health Services (Medical, Dental, Nurse, Act 25)	20,434.38					
7340 State Property Tax Reduction Allocation	355,532.29					
7505 Ready to Learn Block Grant	126,151.00					
7820 State Share of Retirement Contributions	1,650,215.17					
<b>7000 Total Revenue from State Sources</b>	<b>\$6,741,965.05</b>					
<b>8000 Revenue from Federal Sources</b>						
8512 IDEA, Part B	8,670.91					
8514 NCLB, Title I - Improving the Academic Achievement of the Disadvantaged	188,020.00					
8515 NCLB, Title II - Preparing, Training and Recruiting High Quality Teachers and Principals	46,251.00					
8517 NCLB, Title IV - 21st Century Schools	14,048.00					

LEA : 103028203 Riverview SD

Printed 10/28/2021 10:52:13 AM

Page - 2 of 4

	<u>Capital Reserve</u> <u>(1431) (32)</u>	<u>Other Capital</u> <u>Projects Fund (39)</u>	<u>Debt Service (40)</u>	<u>Permanent (90)</u>	<u>Total</u>
<b>6000 Revenue from Local Sources</b>					
6111 Current Real Estate Taxes					14,528,062.39
6113 Public Utility Realty Taxes					15,862.77
6143 Current Act 511 Local Services Taxes					21,949.43
6151 Current Act 511 Earned Income Taxes					1,168,165.19
6153 Current Act 511 Real Estate Transfer Taxes					355,702.29
6411 Delinquent Real Estate Taxes					975,379.02
6451 Delinquent Act 511 Earned Income Taxes					418,770.71
6500 Earnings on Investments	7,345.00	9,318.00			25,068.43
6700 Revenues from LEA Activities					(2,492.66)
6832 Federal IDEA Revenue Received as Pass Through					201,733.68
6910 Rentals					8,580.00
6920 Contributions and Donations from Private Sources					13.15
6991 Refunds of a Prior Year Expenditure					30,939.42
6999 Other Revenues Not Specified Above					8,660.03
<b>6000 Total Revenue from Local Sources</b>	<b>\$7,345.00</b>	<b>\$9,318.00</b>			<b>\$17,756,393.85</b>
<b>7000 Revenue from State Sources</b>					
7111 Basic Education Funding-Formula					3,095,545.38
7112 Basic Education Funding-Social Security					350,117.67
7160 Tuition for Orphans Subsidy					16,339.27
7220 Vocational Education					9,290.50
7271 Special Education funds for School-Aged Pupils					702,906.33
7311 Pupil Transportation Subsidy					193,832.35
7312 Nonpublic and Charter School Pupil Transportation Subsidy					22,715.00
7320 Rental and Sinking Fund Payments / Building Reimbursement Subsidy					198,885.71
7330 Health Services (Medical, Dental, Nurse, Act 25)					20,434.38
7340 State Property Tax Reduction Allocation					355,532.29
7505 Ready to Learn Block Grant					126,151.00
7820 State Share of Retirement Contributions					1,650,215.17
<b>7000 Total Revenue from State Sources</b>					<b>\$6,741,965.05</b>
<b>8000 Revenue from Federal Sources</b>					
8512 IDEA, Part B					8,670.91
8514 NCLB, Title I - Improving the Academic Achievement of the Disadvantaged					188,020.00
8515 NCLB, Title II - Preparing, Training and Recruiting High Quality Teachers and Principals					46,251.00
8517 NCLB, Title IV - 21st Century Schools					14,048.00

	<u>General Fund (10)</u>	<u>Student Sponsored Activity Fund (21)</u>	<u>Public Purpose Trust (27)</u>	<u>Other Compt Approved (28)</u>	<u>Athletic / Activity (29)</u>	<u>Capital Reserve (690, 1850) (31)</u>
<b>8000 Revenue from Federal Sources</b>						
8690 Other Restricted Federal Grants-in-Aid Through the Commonwealth of PA	64,220.00					
8741 Elementary and Secondary School Emergency Relief Fund (ESSER)	182,382.00					
8743 ESSER II - Elementary and Secondary School Emergency Relief Fund	4,520.55					
8749 Other CARES Act Funding	152,613.70					
8810 School-Based Access Medicaid Reimbursement Program (SBAP) Reimbursements (Access)	23,484.38					
8820 Medical Assistance Reimbursement for Administrative Claiming (Quarterly) Program	1,019.70					
<b>8000 Total Revenue from Federal Sources</b>	<b>\$685,230.24</b>					
<b>9000 Other Financing Sources</b>						
9110 Face Value of Bonds Issued	100,000.00					
9120 Proceeds from Refunding of Bonds	9,555,000.00					
9130 Bond Premiums	435,078.65					
9310 General Fund Transfers						
<b>9000 Total Other Financing Sources</b>	<b>\$10,090,078.65</b>					
<b>Total From All Sources</b>	<b>\$35,257,004.79</b>					

	<u>Capital Reserve</u> <u>(1431) (32)</u>	<u>Other Capital</u> <u>Projects Fund (39)</u>	<u>Debt Service (40)</u>	<u>Permanent (90)</u>	<u>Total</u>
<b>8000 Revenue from Federal Sources</b>					
8690 Other Restricted Federal Grants-in-Aid Through the Commonwealth of PA					64,220.00
8741 Elementary and Secondary School Emergency Relief Fund (ESSER)					182,382.00
8743 ESSER II - Elementary and Secondary School Emergency Relief Fund					4,520.55
8749 Other CARES Act Funding					152,613.70
8810 School-Based Access Medicaid Reimbursement Program (SBAP) Reimbursements (Access)					23,484.38
8820 Medical Assistance Reimbursement for Administrative Claiming (Quarterly) Program					1,019.70
<b>8000 Total Revenue from Federal Sources</b>					<b>\$685,230.24</b>
<b>9000 Other Financing Sources</b>					
9110 Face Value of Bonds Issued		7,215,000.00			7,315,000.00
9120 Proceeds from Refunding of Bonds					9,555,000.00
9130 Bond Premiums					435,078.65
9310 General Fund Transfers	1,000,000.00				1,000,000.00
<b>9000 Total Other Financing Sources</b>	<b>\$1,000,000.00</b>	<b>\$7,215,000.00</b>			<b>\$18,305,078.65</b>
<b>Total From All Sources</b>	<b>\$1,007,345.00</b>	<b>\$7,224,318.00</b>			<b>\$43,488,667.79</b>

	<u>General Fund (10)</u>	<u>Student Sponsored Activity Fund (21)</u>	<u>Public Purpose Trust (27)</u>	<u>Other Compt Approved (28)</u>	<u>Athletic / Activity (29)</u>	<u>Capital Reserve (690, 1850) (31)</u>
Revenue from Local Sources	17,739,730.85					
Revenue from State Sources	6,741,965.05					
Revenue from Federal Sources	685,230.24					
Other Financing Sources	10,090,078.65					
<b>Total From All Sources</b>	<b>\$35,257,004.79</b>					

LEA : 103028203 Riverview SD

Printed 10/28/2021 10:52:17 AM

Page - 2 of 2

	<u>Capital Reserve (1431)</u> (32)	<u>Other Capital Projects</u> <u>Fund (39)</u>	<u>Debt Service (40)</u>	<u>Permanent (90)</u>	<u>Total</u>
Revenue from Local Sources	7,345.00	9,318.00			17,756,393.85
Revenue from State Sources					6,741,965.05
Revenue from Federal Sources					685,230.24
Other Financing Sources	1,000,000.00	7,215,000.00			18,305,078.65
<b>Total From All Sources</b>	<b>\$1,007,345.00</b>	<b>\$7,224,318.00</b>			<b>\$43,488,667.79</b>

**General Fund (10)****1000 Instruction****Total****100 Personnel Services – Salaries**

100 Personnel Services – Salaries	6,618,300.89
-----------------------------------	--------------

**Total Personnel Services – Salaries****\$6,618,300.89****200 Personnel Services – Employee Benefits**

210 Group Insurance – Contracted Provider	1,323,134.10
---	--------------

220 Social Security Contributions	490,941.55
-----------------------------------	------------

230 PSERS Retirement Contributions	2,336,792.09
------------------------------------	--------------

260 Workers' Compensation	58,451.84
---------------------------	-----------

280 Other Post-Employment Benefits (OPEB)	90,100.92
---	-----------

**Total Personnel Services – Employee Benefits****\$4,299,420.50****300 Purchased Professional and Technical Services**

322 Professional Educational Services – Ius	158,426.55
---	------------

323 Professional Educational Services – Other Educational Agencies	200.00
--	--------

330 Other Professional Services	210,650.31
---------------------------------	------------

390 Other Purchased Professional and Technical Services	64,875.12
---	-----------

**Total Purchased Professional and Technical Services****\$434,151.98****400 Purchased Property Services**

430 Repairs and Maintenance Services	2,346.14
--------------------------------------	----------

**Total Purchased Property Services****\$2,346.14****500 Other Purchased Services**

510 Student Transportation Services	7,244.68
-------------------------------------	----------

550 Printing and Binding	176.21
--------------------------	--------

562 Tuition To Pennsylvania Charter Schools	630,359.50
---	------------

564 Tuition To Career and Technology Centers	209,030.21
--	------------

567 Tuition To Approved Private Schools (APS) and PA Chartered Schools for the Deaf and Blind	371,822.58
---	------------

568 Tuition To Private Residential Rehabilitative Institutions (PRRI) [In-State] and Detention Centers	386,772.50
--	------------

569 Tuition – Other	8,054.76
---------------------	----------

580 Travel	1,476.87
------------	----------

**Total Other Purchased Services****\$1,614,937.31****600 Supplies**

610 General Supplies	236,179.55
----------------------	------------

640 Books and Periodicals	18,487.22
---------------------------	-----------

**Total Supplies****\$254,666.77****700 Property**

752 Capital Equipment – Original and Additional	108,468.51
---	------------

**Total Property****\$108,468.51****800 Other Objects**

810 Dues and Fees	3,494.00
-------------------	----------

890 Miscellaneous Expenditures	20,332.64
--------------------------------	-----------

**Total Other Objects****\$23,826.64****Total 1000 Instruction****\$13,356,118.74**

LEA : 103028203 Riverview SD

Printed 10/28/2021 10:52:28 AM

Page - 2 of 19

**General Fund (10)****1100 Regular Programs – Elementary / Secondary****100 Personnel Services – Salaries**

100 Personnel Services – Salaries

**Elementary****Secondary****Federal****Total**

2,750,132.72

2,484,110.55

194,929.77

5,429,173.04

**Total Personnel Services – Salaries****\$2,750,132.72****\$2,484,110.55****\$194,929.77****\$5,429,173.04****200 Personnel Services – Employee Benefits**

210 Group Insurance – Contracted Provider

533,931.96

526,263.94

37,251.59

1,097,447.49

220 Social Security Contributions

205,847.00

184,136.94

12,575.17

402,559.11

230 PSERS Retirement Contributions

1,024,381.45

883,747.54

18,929.46

1,927,058.45

260 Workers' Compensation

23,605.46

22,270.99

2,152.10

48,028.55

280 Other Post-Employment Benefits (OPEB)

90,100.92

90,100.92

**Total Personnel Services – Employee Benefits****\$1,877,866.79****\$1,616,419.41****\$70,908.32****\$3,565,194.52****300 Purchased Professional and Technical Services**

322 Professional Educational Services – lus

2,381.90

2,381.90

330 Other Professional Services

109,833.10

47,740.85

157,573.95

390 Other Purchased Professional and Technical Services

42,200.06

21,100.06

63,300.12

**Total Purchased Professional and Technical Services****\$154,415.06****\$68,840.91****\$223,255.97****400 Purchased Property Services**

430 Repairs and Maintenance Services

2,346.14

2,346.14

**Total Purchased Property Services****\$2,346.14****\$2,346.14****500 Other Purchased Services**

510 Student Transportation Services

7,244.68

7,244.68

550 Printing and Binding

176.21

176.21

562 Tuition To Pennsylvania Charter Schools

283,246.09

347,113.41

630,359.50

580 Travel

1,476.87

1,476.87

**Total Other Purchased Services****\$290,666.98****\$348,590.28****\$639,257.26****600 Supplies**

610 General Supplies

31,409.95

33,400.88

144,961.04

209,771.87

640 Books and Periodicals

12,925.78

5,561.44

18,487.22

**Total Supplies****\$44,335.73****\$38,962.32****\$144,961.04****\$228,259.09****700 Property**

752 Capital Equipment – Original and Additional

1,496.12

6,347.41

98,800.00

106,643.53

**Total Property****\$1,496.12****\$6,347.41****\$98,800.00****\$106,643.53****800 Other Objects**

810 Dues and Fees

800.00

486.00

2,208.00

3,494.00

890 Miscellaneous Expenditures

3,657.95

16,674.69

20,332.64

**Total Other Objects****\$4,457.95****\$17,160.69****\$2,208.00****\$23,826.64****Total 1100 Regular Programs – Elementary / Secondary****\$5,123,371.35****\$4,582,777.71****\$511,807.13****\$10,217,956.19**

LEA : 103028203 Riverview SD

Printed 10/28/2021 10:52:28 AM

Page - 3 of 19

**General Fund (10)****1110 Regular Programs****100 Personnel Services – Salaries**

100 Personnel Services – Salaries

**Elementary****Secondary****Federal****Total**

2,750,132.72

2,484,110.55

194,929.77

5,429,173.04

**Total Personnel Services – Salaries****\$2,750,132.72****\$2,484,110.55****\$194,929.77****\$5,429,173.04****200 Personnel Services – Employee Benefits**

210 Group Insurance – Contracted Provider

533,931.96

526,263.94

37,251.59

1,097,447.49

220 Social Security Contributions

205,847.00

184,136.94

12,575.17

402,559.11

230 PSERS Retirement Contributions

1,024,381.45

883,747.54

18,929.46

1,927,058.45

260 Workers' Compensation

23,605.46

22,270.99

2,152.10

48,028.55

280 Other Post-Employment Benefits (OPEB)

90,100.92

90,100.92

**Total Personnel Services – Employee Benefits****\$1,877,866.79****\$1,616,419.41****\$70,908.32****\$3,565,194.52****300 Purchased Professional and Technical Services**

322 Professional Educational Services – Ius

2,381.90

2,381.90

330 Other Professional Services

109,833.10

47,740.85

157,573.95

390 Other Purchased Professional and Technical Services

42,200.06

21,100.06

63,300.12

**Total Purchased Professional and Technical Services****\$154,415.06****\$68,840.91****\$223,255.97****400 Purchased Property Services**

430 Repairs and Maintenance Services

2,346.14

2,346.14

**Total Purchased Property Services****\$2,346.14****\$2,346.14****500 Other Purchased Services**

510 Student Transportation Services

7,244.68

7,244.68

550 Printing and Binding

176.21

176.21

562 Tuition To Pennsylvania Charter Schools

283,246.09

347,113.41

630,359.50

580 Travel

1,476.87

1,476.87

**Total Other Purchased Services****\$290,666.98****\$348,590.28****\$639,257.26****600 Supplies**

610 General Supplies

31,409.95

33,400.88

144,961.04

209,771.87

640 Books and Periodicals

12,925.78

5,561.44

18,487.22

**Total Supplies****\$44,335.73****\$38,962.32****\$144,961.04****\$228,259.09****700 Property**

752 Capital Equipment – Original and Additional

1,496.12

6,347.41

98,800.00

106,643.53

**Total Property****\$1,496.12****\$6,347.41****\$98,800.00****\$106,643.53****800 Other Objects**

810 Dues and Fees

800.00

486.00

2,208.00

3,494.00

890 Miscellaneous Expenditures

3,657.95

16,674.69

20,332.64

**Total Other Objects****\$4,457.95****\$17,160.69****\$2,208.00****\$23,826.64****Total 1110 Regular Programs****\$5,123,371.35****\$4,582,777.71****\$511,807.13****\$10,217,956.19**

LEA : 103028203 Riverview SD

Printed 10/28/2021 10:52:28 AM

Page - 4 of 19

## General Fund (10)

## 1200 Special Programs – Elementary / Secondary

## 100 Personnel Services – Salaries

100 Personnel Services – Salaries

ElementarySecondaryFederalTotal

471,692.08

315,345.05

201,257.68

988,294.81

**Total Personnel Services – Salaries****\$471,692.08****\$315,345.05****\$201,257.68****\$988,294.81**

## 200 Personnel Services – Employee Benefits

210 Group Insurance – Contracted Provider

58,553.87

98,865.20

157,419.07

220 Social Security Contributions

35,008.10

38,388.01

73,396.11

230 PSERS Retirement Contributions

162,632.16

178,164.45

340,796.61

260 Workers' Compensation

3,976.19

4,466.59

8,442.78

**Total Personnel Services – Employee Benefits****\$260,170.32****\$319,884.25****\$580,054.57**

## 300 Purchased Professional and Technical Services

322 Professional Educational Services – Ius

42,457.09

113,587.56

156,044.65

323 Professional Educational Services – Other Educational Agencies

200.00

200.00

330 Other Professional Services

53,076.36

53,076.36

390 Other Purchased Professional and Technical Services

1,575.00

1,575.00

**Total Purchased Professional and Technical Services****\$95,533.45****\$115,362.56****\$210,896.01**

## 500 Other Purchased Services

564 Tuition To Career and Technology Centers

4,941.41

22,434.82

27,376.23

567 Tuition To Approved Private Schools (APS) and PA Chartered Schools for the Deaf and Blind

5,639.00

343,383.58

349,022.58

568 Tuition To Private Residential Rehabilitative Institutions (PRRI) [In-State] and Detention Centers

140,942.66

189,916.45

330,859.11

569 Tuition – Other

204.76

204.76

**Total Other Purchased Services****\$151,523.07****\$555,939.61****\$707,462.68**

## 600 Supplies

610 General Supplies

501.36

4,236.30

4,737.66

**Total Supplies****\$501.36****\$4,236.30****\$4,737.66**

## 700 Property

752 Capital Equipment – Original and Additional

538.00

538.00

**Total Property****\$538.00****\$538.00****Total 1200 Special Programs – Elementary / Secondary****\$979,958.28****\$1,310,767.77****\$201,257.68****\$2,491,983.73**

LEA : 103028203 Riverview SD

Printed 10/28/2021 10:52:28 AM

Page - 5 of 19

**General Fund (10)****1210 Life Skills Support****600 Supplies**

610 General Supplies

**Total Supplies****Total 1210 Life Skills Support**ElementarySecondaryFederalTotal

61.24

61.24

**\$61.24****\$61.24****\$61.24****\$61.24**

LEA : 103028203 Riverview SD

Printed 10/28/2021 10:52:28 AM

Page - 6 of 19

**General Fund (10)**

<b>1220 Sensory Support</b>	<b><u>Elementary</u></b>	<b><u>Secondary</u></b>	<b><u>Federal</u></b>	<b><u>Total</u></b>
<b>100 <u>Personnel Services – Salaries</u></b>				
100 Personnel Services – Salaries	55,826.50	13,956.50		69,783.00
<b>Total Personnel Services – Salaries</b>	<b>\$55,826.50</b>	<b>\$13,956.50</b>		<b>\$69,783.00</b>
<b>200 <u>Personnel Services – Employee Benefits</u></b>				
210 Group Insurance – Contracted Provider	15,407.04	3,851.52		19,258.56
220 Social Security Contributions	4,147.78	1,037.21		5,184.99
230 PSERS Retirement Contributions	19,265.92	4,816.24		24,082.16
260 Workers' Compensation	609.00			609.00
<b>Total Personnel Services – Employee Benefits</b>	<b>\$39,429.74</b>	<b>\$9,704.97</b>		<b>\$49,134.71</b>
<b>300 <u>Purchased Professional and Technical Services</u></b>				
322 Professional Educational Services – Ius	26,469.59	57,131.71		83,601.30
330 Other Professional Services	50,931.36			50,931.36
<b>Total Purchased Professional and Technical Services</b>	<b>\$77,400.95</b>	<b>\$57,131.71</b>		<b>\$134,532.66</b>
<b>500 <u>Other Purchased Services</u></b>				
567 Tuition To Approved Private Schools (APS) and PA Chartered Schools for the Deaf and Blind	775.00			775.00
<b>Total Other Purchased Services</b>	<b>\$775.00</b>			<b>\$775.00</b>
<b>700 <u>Property</u></b>				
752 Capital Equipment – Original and Additional	538.00			538.00
<b>Total Property</b>	<b>\$538.00</b>			<b>\$538.00</b>
<b>Total 1220 Sensory Support</b>	<b>\$173,970.19</b>	<b>\$80,793.18</b>		<b>\$254,763.37</b>

**General Fund (10)****1230 Emotional Support****300 Purchased Professional and Technical Services**

390 Other Purchased Professional and Technical Services

**Total Purchased Professional and Technical Services****500 Other Purchased Services**

564 Tuition To Career and Technology Centers

567 Tuition To Approved Private Schools (APS) and PA Chartered Schools for the Deaf and Blind

568 Tuition To Private Residential Rehabilitative Institutions (PRRI) [In-State] and Detention Centers

569 Tuition – Other

**Total Other Purchased Services****Total 1230 Emotional Support**

<u>Elementary</u>	<u>Secondary</u>	<u>Federal</u>	<u>Total</u>
	1,575.00		1,575.00
	<b>\$1,575.00</b>		<b>\$1,575.00</b>
4,941.41	22,434.82		27,376.23
4,864.00	41,584.00		46,448.00
140,942.66	189,916.45		330,859.11
	204.76		204.76
<b>\$150,748.07</b>	<b>\$254,140.03</b>		<b>\$404,888.10</b>
<b>\$150,748.07</b>	<b>\$255,715.03</b>		<b>\$406,463.10</b>

## General Fund (10)

## 1240 Academic Support

100 Personnel Services – Salaries

100 Personnel Services – Salaries

ElementarySecondaryFederalTotal

415,865.58

301,388.55

201,257.68

918,511.81

**Total Personnel Services – Salaries****\$415,865.58****\$301,388.55****\$201,257.68****\$918,511.81**200 Personnel Services – Employee Benefits

210 Group Insurance – Contracted Provider

43,146.83

95,013.68

138,160.51

220 Social Security Contributions

30,860.32

37,350.80

68,211.12

230 PSERS Retirement Contributions

143,366.24

173,348.21

316,714.45

260 Workers' Compensation

3,367.19

4,466.59

7,833.78

**Total Personnel Services – Employee Benefits****\$220,740.58****\$310,179.28****\$530,919.86**300 Purchased Professional and Technical Services

322 Professional Educational Services – Ius

15,987.50

56,455.85

72,443.35

323 Professional Educational Services – Other Educational Agencies

200.00

200.00

330 Other Professional Services

2,350.00

2,350.00

**Total Purchased Professional and Technical Services****\$18,337.50****\$56,655.85****\$74,993.35**600 Supplies

610 General Supplies

501.36

4,175.06

4,676.42

**Total Supplies****\$501.36****\$4,175.06****\$4,676.42****Total 1240 Academic Support****\$655,445.02****\$672,398.74****\$201,257.68****\$1,529,101.44**

**General Fund (10)****1241 Learning Support – Public****100 Personnel Services – Salaries**

100 Personnel Services – Salaries

<u>Elementary</u>	<u>Secondary</u>	<u>Federal</u>	<u>Total</u>
345,079.80	228,528.65	201,257.68	774,866.13
<b>\$345,079.80</b>	<b>\$228,528.65</b>	<b>\$201,257.68</b>	<b>\$774,866.13</b>

**Total Personnel Services – Salaries****200 Personnel Services – Employee Benefits**

210 Group Insurance – Contracted Provider

220 Social Security Contributions

230 PSERS Retirement Contributions

260 Workers' Compensation

33,022.14	82,711.36		115,733.50
25,560.02	31,999.16		57,559.18
118,731.80	148,204.19		266,935.99
2,565.09	3,830.74		6,395.83
<b>\$179,879.05</b>	<b>\$266,745.45</b>		<b>\$446,624.50</b>

**Total Personnel Services – Employee Benefits****300 Purchased Professional and Technical Services**

322 Professional Educational Services – Ius

323 Professional Educational Services – Other Educational Agencies

330 Other Professional Services

15,987.50	56,455.85		72,443.35
	200.00		200.00
975.00			975.00
<b>\$16,962.50</b>	<b>\$56,655.85</b>		<b>\$73,618.35</b>

**Total Purchased Professional and Technical Services****600 Supplies**

610 General Supplies

150.00	482.08		632.08
<b>\$150.00</b>	<b>\$482.08</b>		<b>\$632.08</b>

**Total Supplies****Total 1241 Learning Support – Public**

<b>\$542,071.35</b>	<b>\$552,412.03</b>	<b>\$201,257.68</b>	<b>\$1,295,741.06</b>
---------------------	---------------------	---------------------	-----------------------

LEA : 103028203 Riverview SD

Printed 10/28/2021 10:52:28 AM

Page - 10 of 19

**General Fund (10)****1243 Gifted Support****100 Personnel Services – Salaries**

100 Personnel Services – Salaries

**Elementary****Secondary****Federal****Total**

70,785.78

72,859.90

143,645.68

**Total Personnel Services – Salaries****\$70,785.78****\$72,859.90****\$143,645.68****200 Personnel Services – Employee Benefits**

210 Group Insurance – Contracted Provider

10,124.69

12,302.32

22,427.01

220 Social Security Contributions

5,300.30

5,351.64

10,651.94

230 PSERS Retirement Contributions

24,634.44

25,144.02

49,778.46

260 Workers' Compensation

802.10

635.85

1,437.95

**Total Personnel Services – Employee Benefits****\$40,861.53****\$43,433.83****\$84,295.36****300 Purchased Professional and Technical Services**

330 Other Professional Services

1,375.00

1,375.00

**Total Purchased Professional and Technical Services****\$1,375.00****\$1,375.00****600 Supplies**

610 General Supplies

351.36

3,692.98

4,044.34

**Total Supplies****\$351.36****\$3,692.98****\$4,044.34****Total 1243 Gifted Support****\$113,373.67****\$119,986.71****\$233,360.38**

**General Fund (10)****1270 Multi-Handicapped Support****300 Purchased Professional and Technical Services**

330 Other Professional Services

**Total Purchased Professional and Technical Services****Total 1270 Multi-Handicapped Support****Elementary****Secondary****Federal****Total**

(205.00)

(205.00)

(\$205.00)

(\$205.00)

(\$205.00)

(\$205.00)

**General Fund (10)****1290 Special Programs - Other Support****Elementary****Secondary****Federal****Total****500 Other Purchased Services**

567 Tuition To Approved Private Schools (APS) and PA Chartered Schools for the Deaf and Blind

301,799.58

301,799.58

**Total Other Purchased Services****\$301,799.58****\$301,799.58****Total 1290 Special Programs - Other Support****\$301,799.58****\$301,799.58**

LEA : 103028203 Riverview SD

Printed 10/28/2021 10:52:28 AM

Page - 13 of 19

**General Fund (10)****1300 Vocational Education****Elementary****Secondary****Federal****Total****100 Personnel Services – Salaries**

100 Personnel Services – Salaries

187,657.04

187,657.04

**Total Personnel Services – Salaries****\$187,657.04****\$187,657.04****200 Personnel Services – Employee Benefits**

210 Group Insurance – Contracted Provider

45,019.84

45,019.84

220 Social Security Contributions

13,996.68

13,996.68

230 PSERS Retirement Contributions

64,389.98

64,389.98

260 Workers' Compensation

1,893.24

1,893.24

**Total Personnel Services – Employee Benefits****\$125,299.74****\$125,299.74****500 Other Purchased Services**

564 Tuition To Career and Technology Centers

181,653.98

181,653.98

**Total Other Purchased Services****\$181,653.98****\$181,653.98****600 Supplies**

610 General Supplies

7,466.31

7,466.31

**Total Supplies****\$7,466.31****\$7,466.31****700 Property**

752 Capital Equipment – Original and Additional

1,286.98

1,286.98

**Total Property****\$1,286.98****\$1,286.98****Total 1300 Vocational Education****\$503,364.05****\$503,364.05**

LEA : 103028203 Riverview SD

Printed 10/28/2021 10:52:28 AM

Page - 14 of 19

**General Fund (10)****1400 Other Instructional Programs – Elementary / Secondary****100 Personnel Services – Salaries**

100 Personnel Services – Salaries

**Total Personnel Services – Salaries****200 Personnel Services – Employee Benefits**

210 Group Insurance – Contracted Provider

220 Social Security Contributions

230 PSERS Retirement Contributions

260 Workers' Compensation

**Total Personnel Services – Employee Benefits****500 Other Purchased Services**

567 Tuition To Approved Private Schools (APS) and PA Chartered Schools for the Deaf and Blind

568 Tuition To Private Residential Rehabilitative Institutions (PRRI) [In-State] and Detention Centers

569 Tuition – Other

**Total Other Purchased Services****600 Supplies**

610 General Supplies

**Total Supplies****Total 1400 Other Instructional Programs – Elementary / Secondary****Elementary****Secondary****Federal****Total**

9,722.00

3,454.00

13,176.00

**\$9,722.00****\$3,454.00****\$13,176.00**

14,900.58

8,347.12

23,247.70

729.32

260.33

989.65

3,355.07

1,191.98

4,547.05

87.27

87.27

**\$19,072.24****\$9,799.43****\$28,871.67**

22,800.00

22,800.00

720.00

55,193.39

55,913.39

3,850.00

4,000.00

7,850.00

**\$27,370.00****\$59,193.39****\$86,563.39**

155.71

14,048.00

14,203.71

**\$155.71****\$14,048.00****\$14,203.71****\$56,319.95****\$72,446.82****\$14,048.00****\$142,814.77**

LEA : 103028203 Riverview SD

Printed 10/28/2021 10:52:28 AM

Page - 15 of 19

**General Fund (10)****1420 Summer School**

	<u>Elementary</u>	<u>Secondary</u>	<u>Federal</u>	<u>Total</u>
<b>100 Personnel Services – Salaries</b>				
100 Personnel Services – Salaries	9,722.00	3,454.00		13,176.00
<b>Total Personnel Services – Salaries</b>	<b>\$9,722.00</b>	<b>\$3,454.00</b>		<b>\$13,176.00</b>
<b>200 Personnel Services – Employee Benefits</b>				
210 Group Insurance – Contracted Provider	14,900.58	8,347.12		23,247.70
220 Social Security Contributions	729.32	260.33		989.65
230 PSERS Retirement Contributions	3,355.07	1,191.98		4,547.05
260 Workers' Compensation	87.27			87.27
<b>Total Personnel Services – Employee Benefits</b>	<b>\$19,072.24</b>	<b>\$9,799.43</b>		<b>\$28,871.67</b>
<b>500 Other Purchased Services</b>				
567 Tuition To Approved Private Schools (APS) and PA Chartered Schools for the Deaf and Blind	22,800.00			22,800.00
569 Tuition – Other	3,850.00			3,850.00
<b>Total Other Purchased Services</b>	<b>\$26,650.00</b>			<b>\$26,650.00</b>
<b>600 Supplies</b>				
610 General Supplies	155.71			155.71
<b>Total Supplies</b>	<b>\$155.71</b>			<b>\$155.71</b>
<b>Total 1420 Summer School</b>	<b>\$55,599.95</b>	<b>\$13,253.43</b>		<b>\$68,853.38</b>

LEA : 103028203 Riverview SD

Printed 10/28/2021 10:52:28 AM

Page - 16 of 19

**General Fund (10)****1440 Alternative Regular Education Programs****Elementary****Secondary****Federal****Total****500 Other Purchased Services**

568 Tuition To Private Residential Rehabilitative Institutions (PRRI) [In-State] and Detention Centers

720.00

55,193.39

55,913.39

569 Tuition – Other

4,000.00

4,000.00

**Total Other Purchased Services****\$720.00****\$59,193.39****\$59,913.39****Total 1440 Alternative Regular Education Programs****\$720.00****\$59,193.39****\$59,913.39**

General Fund (10)

1441 Adjudicated / Court-Placed Programs	Elementary	Secondary	Federal	Total
500 Other Purchased Services				
568 Tuition To Private Residential Rehabilitative Institutions (PRRI) [In-State] and Detention Centers		55,193.39		55,193.39
Total Other Purchased Services		\$55,193.39		\$55,193.39
Total 1441 Adjudicated / Court-Placed Programs		\$55,193.39		\$55,193.39

LEA : 103028203 Riverview SD

Printed 10/28/2021 10:52:28 AM

Page - 18 of 19

**General Fund (10)****1442 Alternative Education Programs****500 Other Purchased Services**

568 Tuition To Private Residential Rehabilitative Institutions (PRRI) [In-State] and Detention Centers

569 Tuition – Other

**Total Other Purchased Services****Total 1442 Alternative Education Programs**ElementarySecondaryFederalTotal

720.00

720.00

4,000.00

4,000.00

**\$720.00****\$4,000.00****\$4,720.00****\$720.00****\$4,000.00****\$4,720.00**

LEA : 103028203 Riverview SD

Printed 10/28/2021 10:52:28 AM

Page - 19 of 19

**General Fund (10)****1490 Additional Other Instructional Programs****600 Supplies**

610 General Supplies

**Total Supplies****Total 1490 Additional Other Instructional Programs****Elementary****Secondary****Federal****Total**

14,048.00

14,048.00

**\$14,048.00****\$14,048.00****\$14,048.00****\$14,048.00**

LEA : 103028203 Riverview SD

Printed 10/28/2021 10:52:44 AM

Page - 1 of 35

**General Fund (10)****2000 Support Services****Total****100 Personnel Services – Salaries**

100 Personnel Services – Salaries	2,722,995.73
-----------------------------------	--------------

**Total Personnel Services – Salaries****\$2,722,995.73****200 Personnel Services – Employee Benefits**

210 Group Insurance – Contracted Provider	658,246.70
---	------------

220 Social Security Contributions	201,310.12
-----------------------------------	------------

230 PSERS Retirement Contributions	931,870.67
------------------------------------	------------

240 Tuition Reimbursement	20,793.75
---------------------------	-----------

260 Workers' Compensation	31,445.04
---------------------------	-----------

291 Other Retirement Plans	13,837.50
----------------------------	-----------

299 All Other Employee Benefits	1,720.00
---------------------------------	----------

**Total Personnel Services – Employee Benefits****\$1,859,223.78****300 Purchased Professional and Technical Services**

330 Other Professional Services	340,658.95
---------------------------------	------------

390 Other Purchased Professional and Technical Services	6,008.16
---	----------

**Total Purchased Professional and Technical Services****\$346,667.11****400 Purchased Property Services**

410 Cleaning Services	56,846.74
-----------------------	-----------

420 Utility Services	19,704.23
----------------------	-----------

430 Repairs and Maintenance Services	138,161.13
--------------------------------------	------------

460 Extermination Services	2,180.00
----------------------------	----------

**Total Purchased Property Services****\$216,892.10****500 Other Purchased Services**

513 Contracted Carriers	714,527.33
-------------------------	------------

516 Student Transportation Services From the IU	2,504.80
---	----------

520 Insurance – General	16,647.00
-------------------------	-----------

523 General Property and Liability Insurance	46,658.00
--	-----------

530 Communications	48,014.88
--------------------	-----------

541 Advertising Related to Federal Grant Awards	23,250.75
---	-----------

580 Travel	772.67
------------	--------

595 IU Payments By Withholding	18,613.72
--------------------------------	-----------

**Total Other Purchased Services****\$870,989.15****600 Supplies**

610 General Supplies	294,553.46
----------------------	------------

620 Energy	272,230.13
------------	------------

640 Books and Periodicals	278,021.17
---------------------------	------------

650 Supplies & Fees – Technology Related	4,025.00
--	----------

**Total Supplies****\$848,829.76****700 Property**

752 Capital Equipment – Original and Additional	117,863.79
---	------------

756 Capitalized Technology Equipment – Original	1,809.25
---	----------

762 Capitalized Equipment - Replacement	338.64
---	--------

766 Capitalized Technology Equipment – Replacement	30,000.00
--	-----------

General Fund (10)

2000 Support Services

	Total
Total Property	\$150,011.68
800 Other Objects	
810 Dues and Fees	190,128.59
Total Other Objects	\$190,128.59
Total 2000 Support Services	\$7,205,737.90

**General Fund (10)****2100 Support Services – Students****100 Personnel Services – Salaries**

100 Personnel Services – Salaries

<u>Elementary</u>	<u>Secondary</u>	<u>Federal</u>	<u>Total</u>
159,406.33	167,349.00		326,755.33
<b>\$159,406.33</b>	<b>\$167,349.00</b>		<b>\$326,755.33</b>

**Total Personnel Services – Salaries****200 Personnel Services – Employee Benefits**

210 Group Insurance – Contracted Provider

220 Social Security Contributions

230 PSERS Retirement Contributions

260 Workers' Compensation

35,664.08	40,193.77		75,857.85
11,749.77	12,496.66		24,246.43
54,896.08	57,752.16		112,648.24
1,388.22	1,375.40		2,763.62
<b>\$103,698.15</b>	<b>\$111,817.99</b>		<b>\$215,516.14</b>

**Total Personnel Services – Employee Benefits****300 Purchased Professional and Technical Services**

330 Other Professional Services

	606.00	4,520.55	5,126.55
	<b>\$606.00</b>	<b>\$4,520.55</b>	<b>\$5,126.55</b>

**Total Purchased Professional and Technical Services****600 Supplies**

610 General Supplies

640 Books and Periodicals

(13.99)	313.79		299.80
	3,380.04		3,380.04
<b>(\$13.99)</b>	<b>\$3,693.83</b>		<b>\$3,679.84</b>

**Total Supplies****Total 2100 Support Services – Students**

<b>\$263,090.49</b>	<b>\$283,466.82</b>	<b>\$4,520.55</b>	<b>\$551,077.86</b>
---------------------	---------------------	-------------------	---------------------

**General Fund (10)****2120 Guidance Services****100 Personnel Services – Salaries**

100 Personnel Services – Salaries

**Elementary****Secondary****Federal****Total**

159,406.33

167,349.00

326,755.33

**Total Personnel Services – Salaries****\$159,406.33****\$167,349.00****\$326,755.33****200 Personnel Services – Employee Benefits**

210 Group Insurance – Contracted Provider

220 Social Security Contributions

230 PSERS Retirement Contributions

260 Workers' Compensation

35,664.08

40,193.77

75,857.85

11,749.77

12,496.66

24,246.43

54,896.08

57,752.16

112,648.24

1,388.22

1,375.40

2,763.62

**Total Personnel Services – Employee Benefits****\$103,698.15****\$111,817.99****\$215,516.14****300 Purchased Professional and Technical Services**

330 Other Professional Services

606.00

606.00

**Total Purchased Professional and Technical Services****\$606.00****\$606.00****600 Supplies**

610 General Supplies

640 Books and Periodicals

(13.99)

313.79

299.80

3,380.04

3,380.04

**Total Supplies****(\$13.99)****\$3,693.83****\$3,679.84****Total 2120 Guidance Services****\$263,090.49****\$283,466.82****\$546,557.31**

## General Fund (10)

## 2140 Psychological Services

ElementarySecondaryFederalTotal300 Purchased Professional and Technical Services

330 Other Professional Services

4,520.55

4,520.55

**Total Purchased Professional and Technical Services****\$4,520.55****\$4,520.55****Total 2140 Psychological Services****\$4,520.55****\$4,520.55**

LEA : 103028203 Riverview SD

Printed 10/28/2021 10:52:44 AM

Page - 6 of 35

**General Fund (10)****2200 Support Services – Instructional Staff****100 Personnel Services – Salaries**

100 Personnel Services – Salaries

<u>Elementary</u>	<u>Secondary</u>	<u>Federal</u>	<u>Total</u>
483,067.29	220,485.57	485.25	704,038.11
<b>\$483,067.29</b>	<b>\$220,485.57</b>	<b>\$485.25</b>	<b>\$704,038.11</b>

**Total Personnel Services – Salaries****200 Personnel Services – Employee Benefits**

210 Group Insurance – Contracted Provider

220 Social Security Contributions

230 PSERS Retirement Contributions

240 Tuition Reimbursement

260 Workers' Compensation

117,795.46	78,853.19		196,648.65
35,061.44	16,443.00	35.01	51,539.45
165,706.91	74,716.05	167.46	240,590.42
17,457.00	3,336.75		20,793.75
7,471.86	5,645.47		13,117.33
<b>\$343,492.67</b>	<b>\$178,994.46</b>	<b>\$202.47</b>	<b>\$522,689.60</b>

**Total Personnel Services – Employee Benefits****300 Purchased Professional and Technical Services**

330 Other Professional Services

17,131.79	3,878.29		21,010.08
<b>\$17,131.79</b>	<b>\$3,878.29</b>		<b>\$21,010.08</b>

**Total Purchased Professional and Technical Services****500 Other Purchased Services**

580 Travel

		640.00	640.00
		<b>\$640.00</b>	<b>\$640.00</b>

**Total Other Purchased Services****600 Supplies**

610 General Supplies

640 Books and Periodicals

14,859.48	8,623.86	30,000.00	53,483.34
64,330.09	209,356.21		273,686.30
<b>\$79,189.57</b>	<b>\$217,980.07</b>	<b>\$30,000.00</b>	<b>\$327,169.64</b>

**Total Supplies****700 Property**

752 Capital Equipment – Original and Additional

766 Capitalized Technology Equipment – Replacement

40,139.28	68,869.13		109,008.41
20,000.00	10,000.00		30,000.00
<b>\$60,139.28</b>	<b>\$78,869.13</b>		<b>\$139,008.41</b>

**Total Property****800 Other Objects**

810 Dues and Fees

	3,099.90		3,099.90
	<b>\$3,099.90</b>		<b>\$3,099.90</b>

**Total Other Objects****Total 2200 Support Services – Instructional Staff**

<b>\$983,020.60</b>	<b>\$703,307.42</b>	<b>\$31,327.72</b>	<b>\$1,717,655.74</b>
---------------------	---------------------	--------------------	-----------------------

LEA : 103028203 Riverview SD

Printed 10/28/2021 10:52:44 AM

Page - 7 of 35

**General Fund (10)****2220 Technology Support Services****100 Personnel Services – Salaries**

100 Personnel Services – Salaries

**Total Personnel Services – Salaries****200 Personnel Services – Employee Benefits**

210 Group Insurance – Contracted Provider

220 Social Security Contributions

230 PSERS Retirement Contributions

260 Workers' Compensation

**Total Personnel Services – Employee Benefits****300 Purchased Professional and Technical Services**

330 Other Professional Services

**Total Purchased Professional and Technical Services****600 Supplies**

610 General Supplies

640 Books and Periodicals

**Total Supplies****700 Property**

752 Capital Equipment – Original and Additional

766 Capitalized Technology Equipment – Replacement

**Total Property****Total 2220 Technology Support Services****Elementary****Secondary****Federal****Total**

77,106.12

79,606.10

156,712.22

**\$77,106.12****\$79,606.10****\$156,712.22**

9,391.92

9,993.67

19,385.59

5,746.91

5,933.46

11,680.37

26,350.46

26,350.45

52,700.91

1,549.66

1,549.66

**\$41,489.29****\$43,827.24****\$85,316.53**

1,854.88

990.19

2,845.07

**\$1,854.88****\$990.19****\$2,845.07**

8,113.38

3,842.35

30,000.00

41,955.73

49,211.83

87,904.04

137,115.87

**\$57,325.21****\$91,746.39****\$30,000.00****\$179,071.60**

40,139.28

68,869.13

109,008.41

20,000.00

10,000.00

30,000.00

**\$60,139.28****\$78,869.13****\$139,008.41****\$237,914.78****\$295,039.05****\$30,000.00****\$562,953.83**

**General Fund (10)****2250 School Library Services****100 Personnel Services – Salaries**

100 Personnel Services – Salaries

**Total Personnel Services – Salaries****200 Personnel Services – Employee Benefits**

210 Group Insurance – Contracted Provider

220 Social Security Contributions

230 PSERS Retirement Contributions

260 Workers' Compensation

**Total Personnel Services – Employee Benefits****600 Supplies**

610 General Supplies

640 Books and Periodicals

**Total Supplies****Total 2250 School Library Services****Elementary****Secondary****Federal****Total**

60,330.64

31,079.36

91,410.00

**\$60,330.64****\$31,079.36****\$91,410.00**

10,978.10

5,652.99

16,631.09

4,480.77

2,308.26

6,789.03

20,820.02

10,725.52

31,545.54

3,137.51

1,771.25

4,908.76

**\$39,416.40****\$20,458.02****\$59,874.42**

607.44

749.08

1,356.52

11,458.26

14,950.91

26,409.17

**\$12,065.70****\$15,699.99****\$27,765.69****\$111,812.74****\$67,237.37****\$179,050.11**

**General Fund (10)****2260 Instruction and Curriculum Development Services**

	<u>Elementary</u>	<u>Secondary</u>	<u>Federal</u>	<u>Total</u>
<b>100 Personnel Services – Salaries</b>				
100 Personnel Services – Salaries	836.00	4,132.26		4,968.26
<b>Total Personnel Services – Salaries</b>	<b>\$836.00</b>	<b>\$4,132.26</b>		<b>\$4,968.26</b>
<b>200 Personnel Services – Employee Benefits</b>				
210 Group Insurance – Contracted Provider	331.45	43,328.22		43,659.67
220 Social Security Contributions	62.89	305.74		368.63
230 PSERS Retirement Contributions	288.51	1,411.52		1,700.03
260 Workers' Compensation		1,042.53		1,042.53
<b>Total Personnel Services – Employee Benefits</b>	<b>\$682.85</b>	<b>\$46,088.01</b>		<b>\$46,770.86</b>
<b>300 Purchased Professional and Technical Services</b>				
330 Other Professional Services	5,466.66	1,966.68		7,433.34
<b>Total Purchased Professional and Technical Services</b>	<b>\$5,466.66</b>	<b>\$1,966.68</b>		<b>\$7,433.34</b>
<b>600 Supplies</b>				
610 General Supplies	6,138.66	4,032.43		10,171.09
640 Books and Periodicals	3,660.00	106,501.26		110,161.26
<b>Total Supplies</b>	<b>\$9,798.66</b>	<b>\$110,533.69</b>		<b>\$120,332.35</b>
<b>800 Other Objects</b>				
810 Dues and Fees		3,099.90		3,099.90
<b>Total Other Objects</b>		<b>\$3,099.90</b>		<b>\$3,099.90</b>
<b>Total 2260 Instruction and Curriculum Development Services</b>	<b>\$16,784.17</b>	<b>\$165,820.54</b>		<b>\$182,604.71</b>

LEA : 103028203 Riverview SD

Printed 10/28/2021 10:52:44 AM

Page - 10 of 35

**General Fund (10)****2270 Instructional Staff Professional Development Services****200 Personnel Services – Employee Benefits**

240 Tuition Reimbursement

**Total Personnel Services – Employee Benefits****Elementary****Secondary****Federal****Total**

17,457.00

3,336.75

20,793.75

**\$17,457.00****\$3,336.75****\$20,793.75****500 Other Purchased Services**

580 Travel

**Total Other Purchased Services**

640.00

640.00

**\$640.00****\$640.00****Total 2270 Instructional Staff Professional Development Services****\$17,457.00****\$3,336.75****\$640.00****\$21,433.75**

LEA : 103028203 Riverview SD

Printed 10/28/2021 10:52:44 AM

Page - 11 of 35

## General Fund (10)

2290 Other Instructional Staff Services	Elementary	Secondary	Federal	Total
<b>100 Personnel Services – Salaries</b>				
100 Personnel Services – Salaries	344,794.53	105,667.85	485.25	450,947.63
<b>Total Personnel Services – Salaries</b>	<b>\$344,794.53</b>	<b>\$105,667.85</b>	<b>\$485.25</b>	<b>\$450,947.63</b>
<b>200 Personnel Services – Employee Benefits</b>				
210 Group Insurance – Contracted Provider	97,093.99	19,878.31		116,972.30
220 Social Security Contributions	24,770.87	7,895.54	35.01	32,701.42
230 PSERS Retirement Contributions	118,247.92	36,228.56	167.46	154,643.94
260 Workers' Compensation	4,334.35	1,282.03		5,616.38
<b>Total Personnel Services – Employee Benefits</b>	<b>\$244,447.13</b>	<b>\$65,284.44</b>	<b>\$202.47</b>	<b>\$309,934.04</b>
<b>300 Purchased Professional and Technical Services</b>				
330 Other Professional Services	9,810.25	921.42		10,731.67
<b>Total Purchased Professional and Technical Services</b>	<b>\$9,810.25</b>	<b>\$921.42</b>		<b>\$10,731.67</b>
<b>Total 2290 Other Instructional Staff Services</b>	<b>\$599,051.91</b>	<b>\$171,873.71</b>	<b>\$687.72</b>	<b>\$771,613.34</b>

LEA : 103028203 Riverview SD

Printed 10/28/2021 10:52:44 AM

Page - 12 of 35

**General Fund (10)****2300 Support Services – Administration****100 Personnel Services – Salaries**

100 Personnel Services – Salaries

**Elementary****Secondary****Federal****Total**

292,690.63

271,543.30

814,268.02

**Total Personnel Services – Salaries****\$292,690.63****\$271,543.30****\$814,268.02****200 Personnel Services – Employee Benefits**

210 Group Insurance – Contracted Provider

57,608.44

69,433.95

177,736.11

220 Social Security Contributions

21,618.40

20,141.14

60,437.43

230 PSERS Retirement Contributions

100,231.11

92,674.67

279,192.40

260 Workers' Compensation

2,576.52

2,602.69

7,422.25

291 Other Retirement Plans

13,837.50

**Total Personnel Services – Employee Benefits****\$182,034.47****\$184,852.45****\$538,625.69****300 Purchased Professional and Technical Services**

330 Other Professional Services

826.02

461.56

274,539.71

390 Other Purchased Professional and Technical Services

6,008.16

**Total Purchased Professional and Technical Services****\$826.02****\$461.56****\$280,547.87****500 Other Purchased Services**

520 Insurance – General

16,647.00

541 Advertising Related to Federal Grant Awards

23,250.75

580 Travel

147.89

**Total Other Purchased Services****\$40,045.64****600 Supplies**

610 General Supplies

4,512.82

609.67

14,762.99

640 Books and Periodicals

206.18

140.00

861.55

650 Supplies &amp; Fees – Technology Related

2,683.34

1,341.66

4,025.00

**Total Supplies****\$7,402.34****\$2,091.33****\$19,649.54****700 Property**

752 Capital Equipment – Original and Additional

538.00

538.00

**Total Property****\$538.00****\$538.00****800 Other Objects**

810 Dues and Fees

595.00

1,069.00

167,808.28

**Total Other Objects****\$595.00****\$1,069.00****\$167,808.28****Total 2300 Support Services – Administration****\$484,086.46****\$460,017.64****\$1,861,483.04**

LEA : 103028203 Riverview SD

Printed 10/28/2021 10:52:44 AM

Page - 13 of 35

**General Fund (10)****2310 Board Services****Elementary****Secondary****Federal****Total****300 Purchased Professional and Technical Services**

330 Other Professional Services

17,652.25

**Total Purchased Professional and Technical Services****\$17,652.25****500 Other Purchased Services**

520 Insurance – General

12,088.00

541 Advertising Related to Federal Grant Awards

6,565.75

**Total Other Purchased Services****\$18,653.75****600 Supplies**

610 General Supplies

1,498.63

**Total Supplies****\$1,498.63****800 Other Objects**

810 Dues and Fees

11,376.39

**Total Other Objects****\$11,376.39****Total 2310 Board Services****\$49,181.02**

LEA : 103028203 Riverview SD

Printed 10/28/2021 10:52:44 AM

Page - 14 of 35

## General Fund (10)

## 2330 Tax Assessment and Collection Services

ElementarySecondaryFederalTotal300 Purchased Professional and Technical Services

330 Other Professional Services

179,472.82

390 Other Purchased Professional and Technical Services

6,008.16

**Total Purchased Professional and Technical Services****\$185,480.98**500 Other Purchased Services

520 Insurance – General

4,559.00

**Total Other Purchased Services****\$4,559.00****Total 2330 Tax Assessment and Collection Services****\$190,039.98**

**General Fund (10)****2350 Legal and Accounting Services****Elementary****Secondary****Federal****Total****300 Purchased Professional and Technical Services**

330 Other Professional Services

74,764.00

**Total Purchased Professional and Technical Services****\$74,764.00****Total 2350 Legal and Accounting Services****\$74,764.00**

LEA : 103028203 Riverview SD

Printed 10/28/2021 10:52:44 AM

Page - 16 of 35

**General Fund (10)****2360 Office of the Superintendent / Executive Director Services**

	<u>Elementary</u>	<u>Secondary</u>	<u>Federal</u>	<u>Total</u>
<b>100 Personnel Services – Salaries</b>				
100 Personnel Services – Salaries				250,034.09
<b>Total Personnel Services – Salaries</b>				<b>\$250,034.09</b>
<b>200 Personnel Services – Employee Benefits</b>				
210 Group Insurance – Contracted Provider				50,693.72
220 Social Security Contributions				18,677.89
230 PSERS Retirement Contributions				86,286.62
260 Workers' Compensation				2,243.04
291 Other Retirement Plans				13,837.50
<b>Total Personnel Services – Employee Benefits</b>				<b>\$171,738.77</b>
<b>300 Purchased Professional and Technical Services</b>				
330 Other Professional Services				1,363.06
<b>Total Purchased Professional and Technical Services</b>				<b>\$1,363.06</b>
<b>500 Other Purchased Services</b>				
541 Advertising Related to Federal Grant Awards				16,685.00
580 Travel				147.89
<b>Total Other Purchased Services</b>				<b>\$16,832.89</b>
<b>600 Supplies</b>				
610 General Supplies				6,387.87
640 Books and Periodicals				515.37
<b>Total Supplies</b>				<b>\$6,903.24</b>
<b>800 Other Objects</b>				
810 Dues and Fees				2,892.00
<b>Total Other Objects</b>				<b>\$2,892.00</b>
<b>Total 2360 Office of the Superintendent / Executive Director Services</b>				<b>\$449,764.05</b>

LEA : 103028203 Riverview SD

Printed 10/28/2021 10:52:44 AM

Page - 17 of 35

**General Fund (10)**

<b>2380 Office of the Principal Services</b>	<b><u>Elementary</u></b>	<b><u>Secondary</u></b>	<b><u>Federal</u></b>	<b><u>Total</u></b>
<b>100 Personnel Services – Salaries</b>				
100 Personnel Services – Salaries	292,690.63	271,543.30		564,233.93
<b>Total Personnel Services – Salaries</b>	<b>\$292,690.63</b>	<b>\$271,543.30</b>		<b>\$564,233.93</b>
<b>200 Personnel Services – Employee Benefits</b>				
210 Group Insurance – Contracted Provider	57,608.44	69,433.95		127,042.39
220 Social Security Contributions	21,618.40	20,141.14		41,759.54
230 PSERS Retirement Contributions	100,231.11	92,674.67		192,905.78
260 Workers' Compensation	2,576.52	2,602.69		5,179.21
<b>Total Personnel Services – Employee Benefits</b>	<b>\$182,034.47</b>	<b>\$184,852.45</b>		<b>\$366,886.92</b>
<b>300 Purchased Professional and Technical Services</b>				
330 Other Professional Services	826.02	461.56		1,287.58
<b>Total Purchased Professional and Technical Services</b>	<b>\$826.02</b>	<b>\$461.56</b>		<b>\$1,287.58</b>
<b>600 Supplies</b>				
610 General Supplies	4,512.82	609.67		5,122.49
640 Books and Periodicals	206.18	140.00		346.18
650 Supplies & Fees – Technology Related	2,683.34	1,341.66		4,025.00
<b>Total Supplies</b>	<b>\$7,402.34</b>	<b>\$2,091.33</b>		<b>\$9,493.67</b>
<b>700 Property</b>				
752 Capital Equipment – Original and Additional	538.00			538.00
<b>Total Property</b>	<b>\$538.00</b>			<b>\$538.00</b>
<b>800 Other Objects</b>				
810 Dues and Fees	595.00	1,069.00		1,664.00
<b>Total Other Objects</b>	<b>\$595.00</b>	<b>\$1,069.00</b>		<b>\$1,664.00</b>
<b>Total 2380 Office of the Principal Services</b>	<b>\$484,086.46</b>	<b>\$460,017.64</b>		<b>\$944,104.10</b>

## General Fund (10)

## 2390 Other Administration Services

ElementarySecondaryFederalTotal600 Supplies

610 General Supplies

1,754.00

**Total Supplies****\$1,754.00**800 Other Objects

810 Dues and Fees

151,875.89

**Total Other Objects****\$151,875.89****Total 2390 Other Administration Services****\$153,629.89**

LEA : 103028203 Riverview SD

Printed 10/28/2021 10:52:44 AM

Page - 19 of 35

**General Fund (10)****2400 Support Services – Pupil Health****Elementary****Secondary****Federal****Total****100 Personnel Services – Salaries**

100 Personnel Services – Salaries

72,354.48

**Total Personnel Services – Salaries****\$72,354.48****200 Personnel Services – Employee Benefits**

210 Group Insurance – Contracted Provider

20,349.50

220 Social Security Contributions

5,352.40

230 PSERS Retirement Contributions

24,969.57

260 Workers' Compensation

643.89

**Total Personnel Services – Employee Benefits****\$51,315.36****300 Purchased Professional and Technical Services**

330 Other Professional Services

7,191.20

**Total Purchased Professional and Technical Services****\$7,191.20****500 Other Purchased Services**

580 Travel

18.06

**Total Other Purchased Services****\$18.06****600 Supplies**

610 General Supplies

3,467.82

**Total Supplies****\$3,467.82****700 Property**

752 Capital Equipment – Original and Additional

6,608.23

**Total Property****\$6,608.23****800 Other Objects**

810 Dues and Fees

130.00

**Total Other Objects****\$130.00****Total 2400 Support Services – Pupil Health****\$141,085.15**

LEA : 103028203 Riverview SD

Printed 10/28/2021 10:52:44 AM

Page - 20 of 35

**General Fund (10)****2420 Medical Services****Elementary****Secondary****Federal****Total****300 Purchased Professional and Technical Services**

330 Other Professional Services

6,950.00

**Total Purchased Professional and Technical Services****\$6,950.00****Total 2420 Medical Services****\$6,950.00**

LEA : 103028203 Riverview SD

Printed 10/28/2021 10:52:44 AM

Page - 21 of 35

**General Fund (10)****2440 Nursing Services****Elementary****Secondary****Federal****Total****100 Personnel Services – Salaries**

100 Personnel Services – Salaries

72,354.48

**Total Personnel Services – Salaries****\$72,354.48****200 Personnel Services – Employee Benefits**

210 Group Insurance – Contracted Provider

20,349.50

220 Social Security Contributions

5,352.40

230 PSERS Retirement Contributions

24,969.57

260 Workers' Compensation

643.89

**Total Personnel Services – Employee Benefits****\$51,315.36****300 Purchased Professional and Technical Services**

330 Other Professional Services

241.20

**Total Purchased Professional and Technical Services****\$241.20****500 Other Purchased Services**

580 Travel

18.06

**Total Other Purchased Services****\$18.06****600 Supplies**

610 General Supplies

3,467.82

**Total Supplies****\$3,467.82****700 Property**

752 Capital Equipment – Original and Additional

6,608.23

**Total Property****\$6,608.23****800 Other Objects**

810 Dues and Fees

130.00

**Total Other Objects****\$130.00****Total 2440 Nursing Services****\$134,135.15**

LEA : 103028203 Riverview SD

Printed 10/28/2021 10:52:44 AM

Page - 22 of 35

**General Fund (10)****2500 Support Services – Business****Elementary****Secondary****Federal****Total****100 Personnel Services – Salaries**

100 Personnel Services – Salaries

233,333.56

**Total Personnel Services – Salaries****\$233,333.56****200 Personnel Services – Employee Benefits**

210 Group Insurance – Contracted Provider

49,614.81

220 Social Security Contributions

17,352.55

230 PSERS Retirement Contributions

79,833.16

260 Workers' Compensation

2,097.32

**Total Personnel Services – Employee Benefits****\$148,897.84****300 Purchased Professional and Technical Services**

330 Other Professional Services

(3,370.00)

**Total Purchased Professional and Technical Services****(\$3,370.00)****500 Other Purchased Services**

530 Communications

1,577.99

580 Travel

(401.78)

**Total Other Purchased Services****\$1,176.21****600 Supplies**

610 General Supplies

12,761.08

640 Books and Periodicals

93.28

**Total Supplies****\$12,854.36****800 Other Objects**

810 Dues and Fees

18,901.41

**Total Other Objects****\$18,901.41****Total 2500 Support Services – Business****\$411,793.38**

LEA : 103028203 Riverview SD

Printed 10/28/2021 10:52:44 AM

Page - 23 of 35

**General Fund (10)****2510 Fiscal Services****Elementary****Secondary****Federal****Total****100 Personnel Services – Salaries**

100 Personnel Services – Salaries

233,333.56

**Total Personnel Services – Salaries****\$233,333.56****200 Personnel Services – Employee Benefits**

210 Group Insurance – Contracted Provider

49,614.81

220 Social Security Contributions

17,352.55

230 PSERS Retirement Contributions

79,833.16

260 Workers' Compensation

2,097.32

**Total Personnel Services – Employee Benefits****\$148,897.84****300 Purchased Professional and Technical Services**

330 Other Professional Services

(3,370.00)

**Total Purchased Professional and Technical Services****(\$3,370.00)****500 Other Purchased Services**

530 Communications

1,577.99

580 Travel

(401.78)

**Total Other Purchased Services****\$1,176.21****600 Supplies**

610 General Supplies

12,761.08

640 Books and Periodicals

93.28

**Total Supplies****\$12,854.36****800 Other Objects**

810 Dues and Fees

18,901.41

**Total Other Objects****\$18,901.41****Total 2510 Fiscal Services****\$411,793.38**

LEA : 103028203 Riverview SD

Printed 10/28/2021 10:52:44 AM

Page - 24 of 35

**General Fund (10)****2511 Supervision of Fiscal Services - Head of Component**

	<u>Elementary</u>	<u>Secondary</u>	<u>Federal</u>	<u>Total</u>
<b>100 Personnel Services – Salaries</b>				
100 Personnel Services – Salaries				233,333.56
<b>Total Personnel Services – Salaries</b>				<b>\$233,333.56</b>
<b>200 Personnel Services – Employee Benefits</b>				
210 Group Insurance – Contracted Provider				49,614.81
220 Social Security Contributions				17,352.55
230 PSERS Retirement Contributions				79,833.16
260 Workers' Compensation				2,097.32
<b>Total Personnel Services – Employee Benefits</b>				<b>\$148,897.84</b>
<b>300 Purchased Professional and Technical Services</b>				
330 Other Professional Services				(3,370.00)
<b>Total Purchased Professional and Technical Services</b>				<b>(\$3,370.00)</b>
<b>500 Other Purchased Services</b>				
530 Communications				1,577.99
580 Travel				(401.78)
<b>Total Other Purchased Services</b>				<b>\$1,176.21</b>
<b>600 Supplies</b>				
610 General Supplies				12,761.08
640 Books and Periodicals				93.28
<b>Total Supplies</b>				<b>\$12,854.36</b>
<b>800 Other Objects</b>				
810 Dues and Fees				18,901.41
<b>Total Other Objects</b>				<b>\$18,901.41</b>
<b>Total 2511 Supervision of Fiscal Services - Head of Component</b>				<b>\$411,793.38</b>

LEA : 103028203 Riverview SD

Printed 10/28/2021 10:52:44 AM

Page - 25 of 35

**General Fund (10)****2600 Operation and Maintenance of Plant Services****Elementary****Secondary****Federal****Total****100 Personnel Services – Salaries**

100 Personnel Services – Salaries

572,246.23

**Total Personnel Services – Salaries****\$572,246.23****200 Personnel Services – Employee Benefits**

210 Group Insurance – Contracted Provider

138,039.78

220 Social Security Contributions

42,381.86

230 PSERS Retirement Contributions

194,636.88

260 Workers' Compensation

5,400.63

299 All Other Employee Benefits

1,720.00

**Total Personnel Services – Employee Benefits****\$382,179.15****300 Purchased Professional and Technical Services**

330 Other Professional Services

36,161.41

**Total Purchased Professional and Technical Services****\$36,161.41****400 Purchased Property Services**

410 Cleaning Services

56,846.74

420 Utility Services

19,704.23

430 Repairs and Maintenance Services

138,161.13

460 Extermination Services

2,180.00

**Total Purchased Property Services****\$216,892.10****500 Other Purchased Services**

523 General Property and Liability Insurance

46,658.00

530 Communications

46,436.89

580 Travel

368.50

**Total Other Purchased Services****\$93,463.39****600 Supplies**

610 General Supplies

45,448.12

34,615.43

129,714.88

209,778.43

620 Energy

272,230.13

**Total Supplies****\$45,448.12****\$34,615.43****\$129,714.88****\$482,008.56****700 Property**

752 Capital Equipment – Original and Additional

1,709.15

756 Capitalized Technology Equipment – Original

1,809.25

762 Capitalized Equipment - Replacement

338.64

**Total Property****\$3,857.04****800 Other Objects**

810 Dues and Fees

189.00

**Total Other Objects****\$189.00****Total 2600 Operation and Maintenance of Plant Services****\$45,448.12****\$34,615.43****\$129,714.88****\$1,786,996.88**

LEA : 103028203 Riverview SD

Printed 10/28/2021 10:52:44 AM

Page - 26 of 35

**General Fund (10)****2610 Supervision of Operation and Maintenance of Plant Services**

	<u>Elementary</u>	<u>Secondary</u>	<u>Federal</u>	<u>Total</u>
<b>100 Personnel Services – Salaries</b>				
100 Personnel Services – Salaries				572,246.23
<b>Total Personnel Services – Salaries</b>				<b>\$572,246.23</b>
<b>200 Personnel Services – Employee Benefits</b>				
210 Group Insurance – Contracted Provider				138,039.78
220 Social Security Contributions				42,381.86
230 PSERS Retirement Contributions				194,636.88
260 Workers' Compensation				5,400.63
299 All Other Employee Benefits				1,720.00
<b>Total Personnel Services – Employee Benefits</b>				<b>\$382,179.15</b>
<b>300 Purchased Professional and Technical Services</b>				
330 Other Professional Services				35,919.46
<b>Total Purchased Professional and Technical Services</b>				<b>\$35,919.46</b>
<b>400 Purchased Property Services</b>				
410 Cleaning Services				56,846.74
420 Utility Services				19,704.23
430 Repairs and Maintenance Services				138,161.13
460 Extermination Services				2,180.00
<b>Total Purchased Property Services</b>				<b>\$216,892.10</b>
<b>500 Other Purchased Services</b>				
523 General Property and Liability Insurance				46,658.00
530 Communications				46,436.89
580 Travel				368.50
<b>Total Other Purchased Services</b>				<b>\$93,463.39</b>
<b>600 Supplies</b>				
610 General Supplies	45,448.12	34,586.53	129,714.88	209,749.53
620 Energy				272,230.13
<b>Total Supplies</b>	<b>\$45,448.12</b>	<b>\$34,586.53</b>	<b>\$129,714.88</b>	<b>\$481,979.66</b>
<b>700 Property</b>				
752 Capital Equipment – Original and Additional				1,709.15
<b>Total Property</b>				<b>\$1,709.15</b>
<b>800 Other Objects</b>				
810 Dues and Fees				189.00
<b>Total Other Objects</b>				<b>\$189.00</b>
<b>Total 2610 Supervision of Operation and Maintenance of Plant Services</b>	<b>\$45,448.12</b>	<b>\$34,586.53</b>	<b>\$129,714.88</b>	<b>\$1,784,578.14</b>

LEA : 103028203 Riverview SD

Printed 10/28/2021 10:52:44 AM

Page - 27 of 35

**General Fund (10)****2611 Supervision of Operation and Maintenance of Plant Services – Head of Component**

	<u>Elementary</u>	<u>Secondary</u>	<u>Federal</u>	<u>Total</u>
<b>100 Personnel Services – Salaries</b>				
100 Personnel Services – Salaries				572,246.23
<b>Total Personnel Services – Salaries</b>				<b>\$572,246.23</b>
<b>200 Personnel Services – Employee Benefits</b>				
210 Group Insurance – Contracted Provider				138,039.78
220 Social Security Contributions				42,381.86
230 PSERS Retirement Contributions				194,636.88
260 Workers' Compensation				5,400.63
299 All Other Employee Benefits				1,720.00
<b>Total Personnel Services – Employee Benefits</b>				<b>\$382,179.15</b>
<b>300 Purchased Professional and Technical Services</b>				
330 Other Professional Services				35,919.46
<b>Total Purchased Professional and Technical Services</b>				<b>\$35,919.46</b>
<b>400 Purchased Property Services</b>				
410 Cleaning Services				56,846.74
420 Utility Services				19,704.23
430 Repairs and Maintenance Services				138,161.13
460 Extermination Services				2,180.00
<b>Total Purchased Property Services</b>				<b>\$216,892.10</b>
<b>500 Other Purchased Services</b>				
523 General Property and Liability Insurance				46,658.00
530 Communications				46,436.89
580 Travel				368.50
<b>Total Other Purchased Services</b>				<b>\$93,463.39</b>
<b>600 Supplies</b>				
610 General Supplies	45,448.12	34,586.53	129,714.88	209,749.53
620 Energy				272,230.13
<b>Total Supplies</b>	<b>\$45,448.12</b>	<b>\$34,586.53</b>	<b>\$129,714.88</b>	<b>\$481,979.66</b>
<b>700 Property</b>				
752 Capital Equipment – Original and Additional				1,709.15
<b>Total Property</b>				<b>\$1,709.15</b>
<b>800 Other Objects</b>				
810 Dues and Fees				189.00
<b>Total Other Objects</b>				<b>\$189.00</b>
<b>Total 2611 Supervision of Operation and Maintenance of Plant Services – Head of Component</b>	<b>\$45,448.12</b>	<b>\$34,586.53</b>	<b>\$129,714.88</b>	<b>\$1,784,578.14</b>

LEA : 103028203 Riverview SD

Printed 10/28/2021 10:52:44 AM

Page - 28 of 35

**General Fund (10)****2660 Safety and Security Services****Elementary****Secondary****Federal****Total****300 Purchased Professional and Technical Services**

330 Other Professional Services

241.95

**Total Purchased Professional and Technical Services****\$241.95****600 Supplies**

610 General Supplies

28.90

28.90

**Total Supplies****\$28.90****\$28.90****700 Property**

756 Capitalized Technology Equipment— Original

1,809.25

762 Capitalized Equipment - Replacement

338.64

**Total Property****\$2,147.89****Total 2660 Safety and Security Services****\$28.90****\$2,418.74**

LEA : 103028203 Riverview SD

Printed 10/28/2021 10:52:44 AM

Page - 29 of 35

**General Fund (10)****2700 Student Transportation Services****Elementary****Secondary****Federal****Total****500 Other Purchased Services**

513 Contracted Carriers

714,527.33

516 Student Transportation Services From the IU

2,504.80

**Total Other Purchased Services****\$717,032.13****Total 2700 Student Transportation Services****\$717,032.13**

LEA : 103028203 Riverview SD

Printed 10/28/2021 10:52:44 AM

Page - 30 of 35

## General Fund (10)

## 2710 Supervision of Student Transportation Services

ElementarySecondaryFederalTotal500 Other Purchased Services

516 Student Transportation Services From the IU

2,504.80

## Total Other Purchased Services

\$2,504.80

## Total 2710 Supervision of Student Transportation Services

\$2,504.80

LEA : 103028203 Riverview SD

Printed 10/28/2021 10:52:44 AM

Page - 31 of 35

**General Fund (10)****2711 Supervision of Student Transportation Services – Head of Component****500 Other Purchased Services**

516 Student Transportation Services From the IU

**Total Other Purchased Services****Total 2711 Supervision of Student Transportation Services – Head of Component**ElementarySecondaryFederalTotal

2,504.80

**\$2,504.80****\$2,504.80**

LEA : 103028203 Riverview SD

Printed 10/28/2021 10:52:44 AM

General Fund (10)

2730 Monitoring Services

500 Other Purchased Services

513 Contracted Carriers

**Total Other Purchased Services**

**Total 2730 Monitoring Services**

<u>Elementary</u>	<u>Secondary</u>	<u>Federal</u>	<u>Total</u>
			40,425.65
			<b>\$40,425.65</b>
			<b>\$40,425.65</b>

LEA : 103028203 Riverview SD

Printed 10/28/2021 10:52:44 AM

Page - 33 of 35

## General Fund (10)

## 2750 Nonpublic Transportation

ElementarySecondaryFederalTotal500 Other Purchased Services

513 Contracted Carriers

674,101.68

**Total Other Purchased Services****\$674,101.68****Total 2750 Nonpublic Transportation****\$674,101.68**

LEA : 103028203 Riverview SD

Printed 10/28/2021 10:52:44 AM

General Fund (10)

2900 Other Support Services

500 Other Purchased Services

595 IU Payments By Withholding

Total Other Purchased Services

Total 2900 Other Support Services

<u>Elementary</u>	<u>Secondary</u>	<u>Federal</u>	<u>Total</u>
			18,613.72
			\$18,613.72
			\$18,613.72

LEA : 103028203 Riverview SD

Printed 10/28/2021 10:52:44 AM

General Fund (10)

2910 Support Services Not Listed Elsewhere In the 2000 Series

500 Other Purchased Services

595 IU Payments By Withholding

Total Other Purchased Services

Total 2910 Support Services Not Listed Elsewhere In the 2000 Series

<u>Elementary</u>	<u>Secondary</u>	<u>Federal</u>	<u>Total</u>
			18,613.72
			\$18,613.72
			\$18,613.72

LEA : 103028203 Riverview SD

Printed 10/28/2021 10:52:52 AM

Page - 1 of 3

**General Fund (10)****3000 Operation of Non-Instructional Services****Total****100 Personnel Services – Salaries**

100 Personnel Services – Salaries

269,414.17

**Total Personnel Services – Salaries****\$269,414.17****200 Personnel Services – Employee Benefits**

220 Social Security Contributions

20,502.56

230 PSERS Retirement Contributions

38,815.36

260 Workers' Compensation

10,531.02

**Total Personnel Services – Employee Benefits****\$69,848.94****300 Purchased Professional and Technical Services**

330 Other Professional Services

32,879.50

350 Security / Safety Services

40,479.70

**Total Purchased Professional and Technical Services****\$73,359.20****400 Purchased Property Services**

410 Cleaning Services

81,564.84

430 Repairs and Maintenance Services

5,937.50

440 Rentals

2,720.51

**Total Purchased Property Services****\$90,222.85****500 Other Purchased Services**

510 Student Transportation Services

55,650.48

580 Travel

1,579.64

**Total Other Purchased Services****\$57,230.12****600 Supplies**

610 General Supplies

15,453.00

**Total Supplies****\$15,453.00****700 Property**

762 Capitalized Equipment - Replacement

20,787.95

790 Other Property

19,639.06

**Total Property****\$40,427.01****800 Other Objects**

810 Dues and Fees

7,578.10

860 Grants To Municipal and Community Service Organizations

2,500.00

890 Miscellaneous Expenditures

10,131.96

**Total Other Objects****\$20,210.06****Total 3000 Operation of Non-Instructional Services****\$636,165.35**

LEA : 103028203 Riverview SD

Printed 10/28/2021 10:52:52 AM

Page - 2 of 3

**General Fund (10)****3200 Student Activities****Elementary****Secondary****Federal****Total****100 Personnel Services – Salaries**

100 Personnel Services – Salaries

263,073.43

**Total Personnel Services – Salaries****\$263,073.43****200 Personnel Services – Employee Benefits**

220 Social Security Contributions

20,017.49

230 PSERS Retirement Contributions

36,627.17

260 Workers' Compensation

10,477.76

**Total Personnel Services – Employee Benefits****\$67,122.42****300 Purchased Professional and Technical Services**

330 Other Professional Services

32,879.50

350 Security / Safety Services

1,463.85

**Total Purchased Professional and Technical Services****\$34,343.35****400 Purchased Property Services**

410 Cleaning Services

81,564.84

430 Repairs and Maintenance Services

5,937.50

440 Rentals

2,720.51

**Total Purchased Property Services****\$90,222.85****500 Other Purchased Services**

510 Student Transportation Services

55,650.48

580 Travel

1,579.64

**Total Other Purchased Services****\$57,230.12****600 Supplies**

610 General Supplies

15,453.00

**Total Supplies****\$15,453.00****700 Property**

762 Capitalized Equipment - Replacement

20,787.95

790 Other Property

19,639.06

**Total Property****\$40,427.01****800 Other Objects**

810 Dues and Fees

7,578.10

890 Miscellaneous Expenditures

10,131.96

**Total Other Objects****\$17,710.06****Total 3200 Student Activities****\$585,582.24**

LEA : 103028203 Riverview SD

Printed 10/28/2021 10:52:52 AM

Page - 3 of 3

**General Fund (10)****3300 Community Services****Elementary****Secondary****Federal****Total****100 Personnel Services – Salaries**

100 Personnel Services – Salaries

6,340.74

**Total Personnel Services – Salaries****\$6,340.74****200 Personnel Services – Employee Benefits**

220 Social Security Contributions

485.07

230 PSERS Retirement Contributions

2,188.19

260 Workers' Compensation

53.26

**Total Personnel Services – Employee Benefits****\$2,726.52****300 Purchased Professional and Technical Services**

350 Security / Safety Services

39,015.85

**Total Purchased Professional and Technical Services****\$39,015.85****800 Other Objects**

860 Grants To Municipal and Community Service Organizations

2,500.00

**Total Other Objects****\$2,500.00****Total 3300 Community Services****\$50,583.11**

LEA : 103028203 Riverview SD

Printed 10/28/2021 10:53:01 AM

Page - 1 of 3

**General Fund (10)****4000 Facilities Acquisition, Construction and Improvement Services****Total****300 Purchased Professional and Technical Services**

330 Other Professional Services

19,350.00

**Total Purchased Professional and Technical Services****\$19,350.00****700 Property**

752 Capital Equipment – Original and Additional

113,888.55

**Total Property****\$113,888.55****Total 4000 Facilities Acquisition, Construction and Improvement Services****\$133,238.55**

LEA : 103028203 Riverview SD

Printed 10/28/2021 10:53:01 AM

Page - 2 of 3

## General Fund (10)

## 4200 Existing Site Improvement Services

ElementarySecondaryFederalTotal700 Property

752 Capital Equipment – Original and Additional

13,888.55

**Total Property****\$13,888.55****Total 4200 Existing Site Improvement Services****\$13,888.55**

LEA : 103028203 Riverview SD

Printed 10/28/2021 10:53:01 AM

Page - 3 of 3

**General Fund (10)****4600 Existing Building Improvement Services****Elementary****Secondary****Federal****Total****300 Purchased Professional and Technical Services**

330 Other Professional Services

19,350.00

**Total Purchased Professional and Technical Services****\$19,350.00****700 Property**

752 Capital Equipment – Original and Additional

100,000.00

**Total Property****\$100,000.00****Total 4600 Existing Building Improvement Services****\$119,350.00**

LEA : 103028203 Riverview SD

Printed 10/28/2021 10:53:11 AM

Page - 1 of 9

**General Fund (10)****5000 Other Expenditures and Financing Uses****Total****800 Other Objects**

830 Interest

507,402.19

880 Refunds of Prior Years' Receipts

53,234.41

**Total Other Objects****\$560,636.60****900 Other Uses of Funds**

910 Redemption of Principal

10,841,535.01

932 Capital Reserve Fund Transfers Applicable To Fund 32

1,000,000.00

939 Other Fund Transfers

86,315.00

**Total Other Uses of Funds****\$11,927,850.01****Total 5000 Other Expenditures and Financing Uses****\$12,488,486.61**

LEA : 103028203 Riverview SD

Printed 10/28/2021 10:53:11 AM

Page - 2 of 9

## General Fund (10)

## 5100 Debt Service / Other Expenditures and Financing Uses

	<u>Elementary</u>	<u>Secondary</u>	<u>Federal</u>	<u>Total</u>
800 <u>Other Objects</u>				
830 Interest				507,402.19
880 Refunds of Prior Years' Receipts				53,234.41
<b>Total Other Objects</b>				<b>\$560,636.60</b>
900 <u>Other Uses of Funds</u>				
910 Redemption of Principal				10,841,535.01
<b>Total Other Uses of Funds</b>				<b>\$10,841,535.01</b>
<b>Total 5100 Debt Service / Other Expenditures and Financing Uses</b>				<b>\$11,402,171.61</b>

LEA : 103028203 Riverview SD

Printed 10/28/2021 10:53:11 AM

Page - 3 of 9

## General Fund (10)

## 5110 Debt Service

ElementarySecondaryFederalTotal800 Other Objects

830 Interest

507,402.19

**Total Other Objects****\$507,402.19**900 Other Uses of Funds

910 Redemption of Principal

1,015,000.00

**Total Other Uses of Funds****\$1,015,000.00****Total 5110 Debt Service****\$1,522,402.19**

LEA : 103028203 Riverview SD

Printed 10/28/2021 10:53:11 AM

Page - 4 of 9

## General Fund (10)

## 5120 Debt Service – Refunded Bonds

ElementarySecondaryFederalTotal900 Other Uses of Funds

910 Redemption of Principal

9,826,535.01

**Total Other Uses of Funds****\$9,826,535.01****Total 5120 Debt Service – Refunded Bonds****\$9,826,535.01**

LEA : 103028203 Riverview SD

Printed 10/28/2021 10:53:11 AM

General Fund (10)

5130 Refund of Prior Year Revenues / Receipts	Elementary	Secondary	Federal	Total
800 Other Objects				
880 Refunds of Prior Years' Receipts				53,234.41
Total Other Objects				\$53,234.41
Total 5130 Refund of Prior Year Revenues / Receipts				\$53,234.41

LEA : 103028203 Riverview SD

Printed 10/28/2021 10:53:11 AM

Page - 6 of 9

## General Fund (10)

## 5200 Interfund Transfers – Out

ElementarySecondaryFederalTotal900 Other Uses of Funds

932 Capital Reserve Fund Transfers Applicable To Fund 32

1,000,000.00

939 Other Fund Transfers

86,315.00

**Total Other Uses of Funds****\$1,086,315.00****Total 5200 Interfund Transfers – Out****\$1,086,315.00**

LEA : 103028203 Riverview SD

Printed 10/28/2021 10:53:11 AM

Page - 7 of 9

## General Fund (10)

## 5230 Capital Projects Fund Transfers

ElementarySecondaryFederalTotal900 Other Uses of Funds

932 Capital Reserve Fund Transfers Applicable To Fund 32

1,000,000.00

**Total Other Uses of Funds****\$1,000,000.00****Total 5230 Capital Projects Fund Transfers****\$1,000,000.00**

LEA : 103028203    Riverview SD

Printed 10/28/2021 10:53:11 AM

General Fund (10)

5250 Enterprise Fund Transfers	Elementary	Secondary	Federal	Total
900 <u>Other Uses of Funds</u>				
939 Other Fund Transfers				83,979.00
Total Other Uses of Funds				\$83,979.00
Total 5250 Enterprise Fund Transfers				\$83,979.00

LEA : 103028203 Riverview SD

Printed 10/28/2021 10:53:11 AM

Page - 9 of 9

## General Fund (10)

## 5280 Student Activity Custodial Fund Transfers

900 Other Uses of Funds

939 Other Fund Transfers

**Total Other Uses of Funds****Total 5280 Student Activity Custodial Fund Transfers**ElementarySecondaryFederalTotal

2,336.00

**\$2,336.00****\$2,336.00**

LEA : 103028203 Riverview SD

Printed 10/28/2021 10:52:46 AM

Page - 1 of 4

## Capital Reserve Fund - \$ 1431 (32)

## 2000 Support Services

Total800 Other Objects

810 Dues and Fees

1,074.57

**Total Other Objects****\$1,074.57****Total 2000 Support Services****\$1,074.57**

LEA : 103028203 Riverview SD

Printed 10/28/2021 10:52:46 AM

Page - 2 of 4

**Capital Reserve Fund - \$ 1431 (32)****2500 Support Services – Business****800 Other Objects**

810 Dues and Fees

**Total Other Objects****Total 2500 Support Services – Business**ElementarySecondaryFederalTotal

1,074.57

**\$1,074.57****\$1,074.57**

LEA : 103028203 Riverview SD

Printed 10/28/2021 10:52:46 AM

Page - 3 of 4

**Capital Reserve Fund - \$ 1431 (32)****2510 Fiscal Services****Elementary****Secondary****Federal****Total****800 Other Objects**

810 Dues and Fees

1,074.57

**Total Other Objects****\$1,074.57****Total 2510 Fiscal Services****\$1,074.57**

LEA : 103028203 Riverview SD

Printed 10/28/2021 10:52:46 AM

Page - 4 of 4

## Capital Reserve Fund - § 1431 (32)

## 2511 Supervision of Fiscal Services - Head of Component

800 Other Objects

810 Dues and Fees

## Total Other Objects

## Total 2511 Supervision of Fiscal Services - Head of Component

ElementarySecondaryFederalTotal

1,074.57

\$1,074.57

\$1,074.57

**Capital Reserve Fund - \$ 1431 (32)**

**4000 Facilities Acquisition, Construction and Improvement Services**

**Total**

**300 Purchased Professional and Technical Services**

330 Other Professional Services

73,248.72

**Total Purchased Professional and Technical Services**

**\$73,248.72**

**700 Property**

762 Capitalized Equipment - Replacement

51,453.52

**Total Property**

**\$51,453.52**

**Total 4000 Facilities Acquisition, Construction and Improvement Services**

**\$124,702.24**

LEA : 103028203 Riverview SD

Printed 10/28/2021 10:53:03 AM

Page - 2 of 2

**Capital Reserve Fund - \$ 1431 (32)****4600 Existing Building Improvement Services****Elementary****Secondary****Federal****Total****300 Purchased Professional and Technical Services**

330 Other Professional Services

73,248.72

**Total Purchased Professional and Technical Services****\$73,248.72****700 Property**

762 Capitalized Equipment - Replacement

51,453.52

**Total Property****\$51,453.52****Total 4600 Existing Building Improvement Services****\$124,702.24**

LEA : 103028203 Riverview SD

Printed 10/28/2021 10:52:49 AM

Page - 1 of 3

**Other Capital Projects Fund (39)****2000 Support Services****Total****800 Other Objects**

810 Dues and Fees

137,808.00

**Total Other Objects****\$137,808.00****Total 2000 Support Services****\$137,808.00**

**Other Capital Projects Fund (39)****2300 Support Services – Administration**ElementarySecondaryFederalTotal**800 Other Objects**

810 Dues and Fees

137,808.00

**Total Other Objects****\$137,808.00****Total 2300 Support Services – Administration****\$137,808.00**

LEA : 103028203 Riverview SD

Printed 10/28/2021 10:52:49 AM

Page - 3 of 3

**Other Capital Projects Fund (39)****2390 Other Administration Services****Elementary****Secondary****Federal****Total****800 Other Objects**

810 Dues and Fees

137,808.00

**Total Other Objects****\$137,808.00****Total 2390 Other Administration Services****\$137,808.00**

LEA : 103028203 Riverview SD

Printed 10/28/2021 10:53:05 AM

Page - 1 of 2

**Other Capital Projects Fund (39)****4000 Facilities Acquisition, Construction and Improvement Services****Total****300 Purchased Professional and Technical Services**

330 Other Professional Services

2,097,245.00

**Total Purchased Professional and Technical Services****\$2,097,245.00****Total 4000 Facilities Acquisition, Construction and Improvement Services****\$2,097,245.00**

**Other Capital Projects Fund (39)****4600 Existing Building Improvement Services****Elementary****Secondary****Federal****Total****300 Purchased Professional and Technical Services**

330 Other Professional Services

2,097,245.00

**Total Purchased Professional and Technical Services****\$2,097,245.00****Total 4600 Existing Building Improvement Services****\$2,097,245.00**

LEA : 103028203 Riverview SD

Printed 10/28/2021 10:53:13 AM

Page - 1 of 3

## Other Capital Projects Fund (39)

## 5000 Other Expenditures and Financing Uses

Total900 Other Uses of Funds

990 Miscellaneous Other Uses of Funds

71,632.00

## Total Other Uses of Funds

\$71,632.00

## Total 5000 Other Expenditures and Financing Uses

\$71,632.00

LEA : 103028203 Riverview SD

Printed 10/28/2021 10:53:13 AM

Page - 2 of 3

**Other Capital Projects Fund (39)****5100 Debt Service / Other Expenditures and Financing Uses**ElementarySecondaryFederalTotal**900 Other Uses of Funds**

990 Miscellaneous Other Uses of Funds

71,632.00

**Total Other Uses of Funds****\$71,632.00****Total 5100 Debt Service / Other Expenditures and Financing Uses****\$71,632.00**

LEA : 103028203 Riverview SD

Printed 10/28/2021 10:53:13 AM

Page - 3 of 3

**Other Capital Projects Fund (39)****5150 Bond Discounts****Elementary****Secondary****Federal****Total****900 Other Uses of Funds**

990 Miscellaneous Other Uses of Funds

71,632.00

**Total Other Uses of Funds****\$71,632.00****Total 5150 Bond Discounts****\$71,632.00**

	<u>General Fund(10)</u>	<u>Student Sponsored Activity Fund(21)</u>	<u>Public Purpose Trust(27)</u>	<u>Other Compt Approved (28)</u>	<u>Athletic / Activity(29)</u>
<b>1000 Instruction</b>					
1100 Regular Programs - Elementary / Secondary	10,217,956.19				
1200 Special Programs - Elementary / Secondary	2,491,983.73				
1300 Vocational Education	503,364.05				
1400 Other Instructional Programs - Elementary / Secondary	142,814.77				
<b>Total Instruction</b>	<b>\$13,356,118.74</b>				
<b>2000 Support Services</b>					
2100 Support Services - Students	551,077.86				
2200 Support Services - Instructional Staff	1,717,655.74				
2300 Support Services - Administration	1,861,483.04				
2400 Support Services - Pupil Health	141,085.15				
2500 Support Services - Business	411,793.38				
2600 Operation and Maintenance of Plant Services	1,786,996.88				
2700 Student Transportation Services	717,032.13				
2900 Other Support Services	18,613.72				
<b>Total Support Services</b>	<b>\$7,205,737.90</b>				
<b>3000 Operation of Non-Instructional Services</b>					
3200 Student Activities	585,582.24				
3300 Community Services	50,583.11				
<b>Total Operation of Non-Instructional Services</b>	<b>\$636,165.35</b>				
<b>4000 Facilities Acquisition, Construction and Improvement Services</b>					
4200 Existing Site Improvement Services	13,888.55				
4600 Existing Building Improvement Services	119,350.00				
<b>Total Facilities Acquisition, Construction and Improvement Services</b>	<b>\$133,238.55</b>				
<b>5000 Other Expenditures and Financing Uses</b>					
5100 Debt Service / Other Expenditures and Financing Uses	11,402,171.61				
5200 Interfund Transfers - Out	1,086,315.00				
<b>Total Other Expenditures and Financing Uses</b>	<b>\$12,488,486.61</b>				
<b>TOTAL ACTUAL EXPENDITURES &amp; OTHER FINANCING USES</b>	<b>\$33,819,747.15</b>				

	<u>Capital Reserve (690_</u> <u>1850)(31)</u>	<u>Capital Reserve (1431)(32)</u>	<u>Other Capital Projects</u> <u>Fund(39)</u>	<u>Debt Service(40)</u>	<u>Permanent(90)</u>
<b>1000 Instruction</b>					
1100 Regular Programs - Elementary / Secondary					
1200 Special Programs - Elementary / Secondary					
1300 Vocational Education					
1400 Other Instructional Programs - Elementary / Secondary					
<b>Total Instruction</b>					
<b>2000 Support Services</b>					
2100 Support Services - Students					
2200 Support Services - Instructional Staff					
2300 Support Services - Administration			137,808.00		
2400 Support Services - Pupil Health					
2500 Support Services - Business		1,074.57			
2600 Operation and Maintenance of Plant Services					
2700 Student Transportation Services					
2900 Other Support Services					
<b>Total Support Services</b>		<b>\$1,074.57</b>	<b>\$137,808.00</b>		
<b>3000 Operation of Non-Instructional Services</b>					
3200 Student Activities					
3300 Community Services					
<b>Total Operation of Non-Instructional Services</b>					
<b>4000 Facilities Acquisition, Construction and Improvement Services</b>					
4200 Existing Site Improvement Services					
4600 Existing Building Improvement Services		124,702.24	2,097,245.00		
<b>Total Facilities Acquisition, Construction and Improvement Services</b>		<b>\$124,702.24</b>	<b>\$2,097,245.00</b>		
<b>5000 Other Expenditures and Financing Uses</b>					
5100 Debt Service / Other Expenditures and Financing Uses				71,632.00	
5200 Interfund Transfers - Out					
<b>Total Other Expenditures and Financing Uses</b>				<b>\$71,632.00</b>	
<b>TOTAL ACTUAL EXPENDITURES &amp; OTHER FINANCING USES</b>		<b>\$125,776.81</b>	<b>\$2,306,685.00</b>		

	<u>Total</u>
<b>1000 Instruction</b>	
1100 Regular Programs - Elementary / Secondary	10,217,956.19
1200 Special Programs - Elementary / Secondary	2,491,983.73
1300 Vocational Education	503,364.05
1400 Other Instructional Programs - Elementary / Secondary	142,814.77
<b>Total Instruction</b>	<b>\$13,356,118.74</b>
<b>2000 Support Services</b>	
2100 Support Services - Students	551,077.86
2200 Support Services - Instructional Staff	1,717,655.74
2300 Support Services - Administration	1,999,291.04
2400 Support Services - Pupil Health	141,085.15
2500 Support Services - Business	412,867.95
2600 Operation and Maintenance of Plant Services	1,786,996.88
2700 Student Transportation Services	717,032.13
2900 Other Support Services	18,613.72
<b>Total Support Services</b>	<b>\$7,344,620.47</b>
<b>3000 Operation of Non-Instructional Services</b>	
3200 Student Activities	585,582.24
3300 Community Services	50,583.11
<b>Total Operation of Non-Instructional Services</b>	<b>\$636,165.35</b>
<b>4000 Facilities Acquisition, Construction and Improvement Services</b>	
4200 Existing Site Improvement Services	13,888.55
4600 Existing Building Improvement Services	2,341,297.24
<b>Total Facilities Acquisition, Construction and Improvement Services</b>	<b>\$2,355,185.79</b>
<b>5000 Other Expenditures and Financing Uses</b>	
5100 Debt Service / Other Expenditures and Financing Uses	11,473,803.61
5200 Interfund Transfers - Out	1,086,315.00
<b>Total Other Expenditures and Financing Uses</b>	<b>\$12,560,118.61</b>
<b>TOTAL ACTUAL EXPENDITURES &amp; OTHER FINANCING USES</b>	<b>\$36,252,208.96</b>

LEA : 103028203 Riverview SD

Printed 10/28/2021 10:53:42 AM

Page - 1 of 1

**PSERS Salary Data (Salary Data should relate to the General Fund only)**

<b>Amount Description</b>	<b>Amount</b>
Total Salary Base for salaries subject to PSERS withholding	9,558,569.14
Total Federally Funded salaries subject to PSERS withholding	234,271.00
	<hr/>

**Title I Expenditure Data**

<b>Amount Description</b>	<b>Amount</b>
Expenditures Funded with Current Title I Funds	188,020.00
Expenditures Funded with Carry over Title I Funds	
<b>Total Title I Expenditure Data</b>	<b>\$188,020.00</b>
	<hr/>

**Title IV Revenue Data**

<b>Amount Description</b>	<b>Amount</b>
Revenue from Title IV-A-1: Student Support and Academic Enrichment Grants	14,048.00
Revenue from Title IV-B: 21st Century Community Learning Centers	
	<hr/>

**Title V Revenue Data**

<b>Amount Description</b>	<b>Amount</b>
Revenue from Title V-B-2: Rural and Low-Income School Programs	
Revenue from Title V-B-1: Small Rural School Achievement (Directly from the Federal Govt)	
	<hr/>

Benefits for Staff Relative to Collective  
Bargaining Agreements

	OBJECT	COVERED	NOT COVERED	TOTAL
10 General Fund	No Self Insurance data to report			
	211 Medical Insurance	1,641,466.68	182,783.28	1,824,249.96
	212 Dental Insurance	110,206.56	11,499.24	121,705.80
	215 Eye Care Insurance	15,932.04	1,770.96	17,703.00
	216 Prescription Insurance			
	271 Self-Insurance Medical Benefits			
	272 Self-Insurance Dental Benefits			
	275 Self-Insurance Eye Care Benefits			
	276 Self-Insurance Prescription Benefits			
	FUND TOTAL	\$1,767,605.28	\$196,053.48	\$1,963,658.76
50 Enterprise Fund	No Self Insurance data to report			
	211 Medical Insurance			
	212 Dental Insurance			
	215 Eye Care Insurance			
	216 Prescription Insurance			
	271 Self-Insurance Medical Benefits			
	272 Self-Insurance Dental Benefits			
	275 Self-Insurance Eye Care Benefits			
	276 Self-Insurance Prescription Benefits			
	FUND TOTAL			
60 Internal Service Fund	No Self Insurance data to report			
	211 Medical Insurance			
	212 Dental Insurance			
	215 Eye Care Insurance			
	216 Prescription Insurance			
	271 Self-Insurance Medical Benefits			
	272 Self-Insurance Dental Benefits			
	275 Self-Insurance Eye Care Benefits			
	276 Self-Insurance Prescription Benefits			
	FUND TOTAL			
Total of All Funds		\$1,767,605.28	\$196,053.48	\$1,963,658.76

LEA : 103028203 Riverview SD

Printed 10/28/2021 10:53:49 AM

Page - 1 of 1

Function	Special Education (Prior Year)	Nonspecial Education (Prior Year)	Total (Prior Year)	Special Education (Current Year)	Nonspecial Education (Current Year)	Total (Current Year)
2120 Guidance Services	54,201.69	487,815.19	542,016.88	54,665.73	491,891.58	546,557.31
2140 Psychological Services						
2150 Speech Pathology and Audiology Services						
2160 Social Work Services						
2260 Instruction and Curriculum Development Services	32,751.99	294,767.94	327,519.93	18,260.47	184,344.24	182,604.71
2350 Legal and Accounting Services	26,880.00	55,106.10	81,986.10	14,952.80	59,811.20	74,764.00
2420 Medical Services	1,390.00	12,510.00	13,900.00	695.00	6,255.00	6,950.00
2440 Nursing Services	12,982.47	115,332.21	128,314.68	13,413.52	120,721.63	134,135.15
2700 Student Transportation Services	242,104.64	726,313.93	968,418.57	179,260.22	537,771.91	717,032.13
<b>Total</b>	<b>\$370,310.79</b>	<b>\$1,691,845.37</b>	<b>\$2,062,156.16</b>	<b>\$281,247.74</b>	<b>\$1,380,795.56</b>	<b>\$1,662,043.30</b>

LEA : 103028203 Riverview SD

Printed 10/28/2021 10:53:53 AM

Page - 1 of 3

## (PRINCIPAL AMOUNTS ONLY)

**GOVERNMENTAL FUNDS/ ACTIVITIES**

	Short-Term Borrowing	General Obligation Bonds/Notes	Authority Building Obligations	Other Long-Term Debt	Other Post- Employment Benefits (OPEB)	Compensated Absences	Net Pension Liability	Total
1. Debt at Beginning of Fiscal Year	3,661.00	17,475,000.00			4,240,860.00	47,520.00	33,777,000.00	55,544,041.00
2. Additional Debt Incurred During Year		16,770,000.00		100,000.00	462,292.00	3,920.00		17,336,212.00
3. Retirements and Repayments	3,661.00	10,700,000.00		20,000.00	121,000.00	14,060.00	1,476,000.00	12,334,721.00
4. Debt at End of Fiscal Year		23,545,000.00		80,000.00	4,582,152.00	37,380.00	32,301,000.00	60,545,532.00
5. Accreted Interest at End Of Fiscal Year								
6. Total Debt and Accreted Interest		23,545,000.00		80,000.00	4,582,152.00	37,380.00	32,301,000.00	60,545,532.00
7. Current Portion P&I - Due within 1 year		1,541,367.00		20,000.00				1,561,367.00
8. Interest Paid during current fiscal year		505,153.00						505,153.00

## (PRINCIPAL AMOUNTS ONLY)

**PROPRIETARY FUNDS**

1. Debt at Beginning of Fiscal Year
2. Additional Debt Incurred During Year
3. Retirements and Repayments
4. Debt at End of Fiscal Year
5. Accreted Interest at End Of Fiscal Year
6. Total Debt and Accreted Interest
7. Current Portion P&I - Due within 1 year
8. Interest Paid during current fiscal year

## Total Principal and Interest Payments Made by Your School - All Funds

Function	Fund	Principal (910)	Principal (920)	Interest (830)	Total (Principal +Interest)	Misc Other Uses (990)
5110	10 General Fund	1,015,000.00		507,402.19	1,522,402.19	
5110	20 Special Revenue Funds					
5110	30 Capital Projects Funds					
5110	40 Debt Service Fund					
5110	90 Permanent Fund					
5120	10 General Fund	9,826,535.01			9,826,535.01	
5120	20 Special Revenue Funds					
5120	30 Capital Projects Funds					
5120	40 Debt Service Fund					
<b>Total Debt Payments - Governmental Funds</b>		<b>\$10,841,535.01</b>		<b>\$507,402.19</b>	<b>\$11,348,937.20</b>	

Function	Fund	Principal (910)	Principal (920)	Interest (830)	Total (Principal +Interest)
5110	50 Enterprise Fund				
5110	60 Internal Service Fund				
5120	50 Enterprise Fund				
5120	60 Internal Service Fund				
<b>Total Debt Payments - Proprietary Funds</b>					

LEA : 103028203 Riverview SD

Printed 10/28/2021 10:53:53 AM

Page - 3 of 3

Debt Category	Debt Issue Date (MM/YYYY)	Debt at Beginning of Fiscal Year	Principal Amounts Only		Debt at End of Fiscal Year	Current Portion Due Within One Year (Principal and Interest)	Interest Paid During Fiscal Year
			Additions	Reductions / Repayments			
Other Short Term Debt		3,661.00		3,661.00			
General Obligation Bonds/Notes – CIB	10/2021		7,215,000.00		7,215,000.00	184,788.00	111,883.00
General Obligation Bonds/Notes – CIB	06/2020		3,125,000.00	35,000.00	3,090,000.00	66,525.00	33,715.00
General Obligation Bonds/Notes – CIB	06/2018	7,195,000.00		5,000.00	7,190,000.00	250,431.00	245,556.00
General Obligation Bonds/Notes – CIB	05/2015	6,640,000.00		6,640,000.00			
General Obligation Bonds/Notes – CIB	05/2015	3,065,000.00		3,065,000.00			
General Obligation Bonds/Notes – CIB	09/2010	575,000.00		5,000.00	570,000.00	27,773.00	22,945.00
General Obligation Bonds/Notes – CIB	6/2020		6,430,000.00	950,000.00	5,480,000.00	1,011,850.00	91,054.00
Extended Term Financing Agreements			100,000.00	20,000.00	80,000.00	20,000.00	
Compensated Absences		47,520.00	3,920.00	14,060.00	37,380.00		
Other Post-Employment Benefits (OPEB)		4,240,860.00	462,292.00	121,000.00	4,582,152.00		
Net Pension Liability		33,777,000.00		1,476,000.00	32,301,000.00		
<b>Totals for Debt Entered:</b>		<b>\$55,544,041.00</b>	<b>\$17,336,212.00</b>	<b>\$12,334,721.00</b>	<b>\$60,545,532.00</b>	<b>\$1,561,367.00</b>	<b>\$505,153.00</b>

**General Fund (10)****Section 1: Tuition/Purchased Services as Reported within Expenditure Detail**

	Amount
Tuition Reported in General Fund Expenditures 1000-560	1,606,039.55
Purchased Services in General Fund Expenditures 1000-594 and 1000-597	
<b>Section 1 Total</b>	<b>\$1,606,039.55</b>

**Section 2: Tuition Paid to Institution Types During Fiscal Year**

	Tuition Paid For Nonspecial Education	Tuition Paid For Special Education	Total
1 1306 Institutions			
2 Institutionalized Children's Programs			
3 Juveniles Incarcerated in Adult Facilities			
4 Residential Treatment Facilities			
5 Other Local Education Agencies	29,303.24	117,212.97	146,516.21
6 Brick and Mortar Charter Schools			
7 Cyber Charter Schools	630,359.50		630,359.50
8 Career and Technology Centers	163,488.59	18,165.39	181,653.98
9 Approved Private Schools		587,596.47	587,596.47
10 PA Chartered Schools for the Deaf and Blind			
11 Private Residential Rehabilitative Institutions		59,913.39	59,913.39
12 Juvenile Detention Centers			
13 Special Program Jointures			
14 Other Tuition Not Included Elsewhere In This Section			
<b>Section 2 Total</b>	<b>\$823,151.33</b>	<b>\$782,888.22</b>	<b>\$1,606,039.55</b>

LEA : 103028203 Riverview SD

Printed 10/28/2021 10:54:00 AM

Page - 1 of 2

**Food Service / Cafeteria Operations Fund (51)****3000 Operation of Non-Instructional Services****Total****500 Other Purchased Services**

570 Food Service Management 405,455.30

**Total Other Purchased Services****\$405,455.30****600 Supplies**

630 Food 41,261.79

**Total Supplies****\$41,261.79****700 Property**

740 Depreciation 8,541.33

**Total Property****\$8,541.33****800 Other Objects**

810 Dues and Fees 1,616.36

**Total Other Objects****\$1,616.36****Total 3000 Operation of Non-Instructional Services****\$456,874.78**

**Food Service / Cafeteria Operations Fund (51)****3100 Food Services****Elementary****Secondary****Federal****Total****500 Other Purchased Services**

570 Food Service Management

405,455.30

**Total Other Purchased Services****\$405,455.30****600 Supplies**

630 Food

41,261.79

**Total Supplies****\$41,261.79****700 Property**

740 Depreciation

8,541.33

**Total Property****\$8,541.33****800 Other Objects**

810 Dues and Fees

1,616.36

**Total Other Objects****\$1,616.36****Total 3100 Food Services****\$456,874.78**

Food Service / Cafeteria Operations Fund (51)

5000 Other Expenditures and Financing Uses

Total

900 Other Uses of Funds

900 Other Uses of Funds

(83,978.82)

Total Other Uses of Funds

(\$83,978.82)

Total 5000 Other Expenditures and Financing Uses

(\$83,978.82)

LEA : 103028203 Riverview SD

Printed 10/28/2021 10:54:04 AM

Page - 2 of 3

**Food Service / Cafeteria Operations Fund (51)****5100 Debt Service / Other Expenditures and Financing Uses****Elementary****Secondary****Federal****Total****900 Other Uses of Funds**

900 Other Uses of Funds

(83,978.82)

**Total Other Uses of Funds****(\$83,978.82)****Total 5100 Debt Service / Other Expenditures and Financing Uses****(\$83,978.82)**

**Food Service / Cafeteria Operations Fund (51)**

**5110 Debt Service**

**900 Other Uses of Funds**

900 Other Uses of Funds

**Total Other Uses of Funds**

**Total 5110 Debt Service**

Elementary

Secondary

Federal

Total

(83,978.82)

**(\$83,978.82)**

**(\$83,978.82)**

	<u>Food Service(51)</u>	<u>Child Care Operations(52)</u>	<u>Other Enterprise(58)</u>	<u>Internal Service(60)</u>	<u>Total</u>
<b>3000 <u>Operation of Non-Instructional Services</u></b>					
3100 Food Services	456,874.78				456,874.78
<b>Total Operation of Non-Instructional Services</b>	<b>\$456,874.78</b>				<b>\$456,874.78</b>
<b>5000 <u>Other Expenditures and Financing Uses</u></b>					
5100 Debt Service / Other Expenditures and Financing Uses	(83,978.82)				(83,978.82)
<b>Total Other Expenditures and Financing Uses</b>	<b>(\$83,978.82)</b>				<b>(\$83,978.82)</b>
<b>TOTAL ACTUAL EXPENDITURES &amp; OTHER FINANCING USES</b>	<b>\$372,895.96</b>				<b>\$372,895.96</b>

LEA : 103028203 Riverview SD

Printed 10/28/2021 10:54:21 AM

Page - 1 of 1

Fund	School	School Number	Local Personnel	Local Nonpersonnel	State Personnel	State Nonpersonnel	Federal Personnel	Federal Nonpersonnel	Total	Explanation
10										
	Riverview JSHS	6928	4,917,469.00	3,287,344.10	1,905,750.32	1,289,871.90	201,733.68	1.00	11,602,170.00	
	Tenth Street El Sch	295	1,315,555.45	1,578,972.82	531,504.48	644,936.50	32,305.00	7,024.00	4,110,298.25	
	Verner El Sch	6109	1,018,334.83	561,955.85	241,151.22	214,978.65	195,277.99	7,024.00	2,238,722.54	
<b>Total</b>			<b>7,251,359.28</b>	<b>5,428,272.77</b>	<b>2,678,406.02</b>	<b>2,149,787.05</b>	<b>429,316.67</b>	<b>14,049.00</b>	<b>17,951,190.79</b>	